

THE ORIGINAL

CONSIDER IT SOLD!



SOUTHERN EQUIPMENT EXCHANGE

May 2024 • Vol. 33 No. 5 - 13820 Orange Ave. • Ft. Pierce, FL 34945

TAKE ONE FREE!

772-473-7910 or 772-216-2462

Visit us today on the web: www.southernequipmentexchange.us
or e-mail: originalsouthernequipment@gmail.com

Palm City Hydraline
Hose & Hydraulic Service and More
 Serving Martin • St. Lucie • North Palm Beach
Austin Everett
 772-283-9698
 7803 Ellipse Way, Stuart, FL | Bay 23 Unit B
hydralinehydraulics@outlook.com



'24 Bobcat UV34XL - New/unused, 23.5 HP diesel, 4x4, factory warranty, 0% for 24 months. Call 863-767-0700. or visit www.doublehequip.com.

Barn Kits & Tube Trusses
Flow Coat Galvanized Trusses
Black Painted Tube Trusses



Overbuilt Designs
352-949-4555

Commercial Kits also available
Galvanized or Red Primer with Z Purlins

Call - Tom Roberts

overbulitdesigns@gmail.com



FUQUA SAWMILL

- Custom Sawn Dragline Mats
- Truck Decking
- Transport Decking
- Loading Skids
- Hardwood Custom Sawing to Order



1751 N.W. 33rd Ave. | Ocala, FL 34475
352-629-4713 | 1-800 FLA-OAKS



'25 Western Star - 49x, x15 Cummins, Allison auto, Galfab 75k hoist, Pioneer tarp. \$279,500. 863-453-5558.

MID FLORIDA LAND SERVICES
 Grinding with Forestry Mulcher No Large Piles of Mulch Left Behind!
 Land/Lot Clearing • Fence Right-of-Ways • Trails for Hunting
 Under Brushing • Heavy Bush Hogging



863-991-1362 - LICENSED AND INSURED



BW CUSTOMS
 Sawmill & Woodworking
 (386) 523-4523
 Brian Whaley

Kiln Dried Live Edge Slabs | Horse Fencing/Corral Boards
 Custom Lumber Beams and Trailer Decking
 Low Boy Decking | Custom Tables and Countertops
BRIAN WHALEY 386-523-4523 | BUNNELL, FL
BWSAWMILL.COM

WANTED
 ANY EQUIPMENT
 CONSTRUCTION OR FARM
Skidsteers • Loaders • Tractors
Dozers • Mowers • Disks
 WE WILL BUY ANY AND ALL EQUIPMENT
JK Equipment
 863-528-1689 | e-mail: jkequipment@live.com
GET THE MOST CASH TODAY!
 HEAVY HAULING NOW AVAILABLE!
 Visit our website:
jandkequipment.com




APPLE INDUSTRIAL SUPPLY CO.
 5900 Orange Avenue (Rte 68)
 Ft. Pierce, FL 34954
 Ph: (772) 466-3800
 Toll Free: 800-222-8258
appleindustrial@aol.com
 Hydraulic Oils & Lubes
LARGE SELECTION OF BEARINGS IN STOCK
COMPLETE HYDRAULIC HOSE ASSEMBLY

WANTED
 New/Used Farm &
 Construction Equipment
 ANY CONDITION, CASH IN HAND



CONTACT "THE TRACTOR MAN"
(863)-273-3244

A&A USED BUSES & TRUCKS, INC.




'15 Mack Granite Roll Off MP7 - Allison 4500, Galbreath 60k, 400k miles. **\$119,500.**



'25 Western Star - 49x, x15 Cummins, Allison auto, Galfab 75k hoist, Pioneer tarp. **\$279,500.**



'14 Freightliner MZ - 6.7 Cummins, Allison auto, 24' box. **\$22,500.**



'16 Kenworth T800 MX 13 - 455hp, A/T, Chalmers susp., 66k GWW, dual exhaust. **\$89,500.**



'25 Peterbilt 567 X15 - Cummins, Allison 4500, Galfab 60k, Pioneer tarp. **\$285,000**



'25 Mack Granite MP 8 - 455HP, Allison 4500, camelback susp., locking gears. **\$195,000.**



'25 Kenworth T880 - X15 Cummins, Allison auto, Galfab hoist, Pioneer tarp. **\$292,500.**



'18 Kenworth T880 - MX 13, 455HP, Allison auto, Galbreath 60k hoist, Pioneer tarp, 200k mi. **\$179,500.**



'24 Peterbilt 567 - X15 Cummins, Allison auto, Galbreath hoist, Pioneer tarp. **\$295K.**



'20 Peterbilt 567 - X12 Cummins, Allison auto, G&H 60k hoist, 275k mi, Pioneer tarp. **\$194,500.**



'07 Mack Granite - 300k miles, Etec, Eaton Fuller 811, 24' flat bed. **\$39,500.**



'24 Mack Granite MPS - 505HP, Allison auto, Galfab 60k hoist, Pioneer tarp, Camelback susp. **\$289,500.**

2508 Hwy. 27 South • Avon Park, FL 33825 • aabusandtruck.com • 863-453-5558



You Pull It or We Pull It

WE BUY JUNK CARS & TRUCKS HIGHEST PRICES PAID!!

Foreign & Domestic Used Engines & Transmissions

Body Parts, Tires, Batteries, Stereos

Scrap Metal Container Service Available

Now Buying Scrap Metal

Hablamos Español

Snake Road Auto Salvage

1650 SE Salerno Road | Stuart, FL 34997
772-287-2060



TINY HOME SHELLS • MAN CAVES • SHE SHEDS • PORTABLE STORAGE • ELECTRICAL PACKAGES • DORMERS



CCI BUILDINGS

GOT YOU COVERED!

Design Your Own Steel Building at ccibuildings.com *Click On* **EZ BUILDER PRO**
FREE DELIVERY **FREE INSTALLATION** **FL APPROVED**

BARNDOMINIUM SHELLS - BUILT TO YOUR SPECS



Design Your Own Pre-Manufactured Wood Sheds at ccisheds.com



TOLL FREE **888-97-STEEL** 888-977-8335

Tom: Ext 802 - tom@ccibuildings.com
Lisa: Ext 804 - lohm@ccibuildings.com
Jeff: Ext 805 - jeff@ccibuildings.com

TINY HOME SHELLS • MAN CAVES • SHE SHEDS • PORTABLE STORAGE • ELECTRICAL PACKAGES • DORMERS

SHUTTERS • WINDOW FLOWER BOXES • THERMAL PANE WINDOWS PARTITION WALLS • DESIGN YOUR SHED • CCISHEDS.COM • CCIBUILDINGS.COM

SHUTTERS • WINDOW FLOWER BOXES • THERMAL PANE WINDOWS PARTITION WALLS • DESIGN YOUR SHED • CCISHEDS.COM • CCIBUILDINGS.COM



WENGER'S OF MYERSTOWN

FARM TRACTOR PARTS

CONSTRUCTION EQUIPMENT

- RECONDITIONED
- NEW & USED

PARTS FOR MOST
MAKES & MODELS

Largest Computerized Inventory in the East!

**BACKHOES • CRAWLERS • GRADERS
EXCAVATORS • RUBBER TIRE LOADERS**

**TOLL FREE:
800-451-5240
FAX: 717-866-7866**

**TOLL FREE:
800-552-5080
FAX: 717-866-4300**

**814 College Street • Myerstown, PA 17067
Mon. - Fri. 7:30AM - 5:00PM • Sat. 7:30 - 12PM
visit us at: www.wengers.com**



'91 Mack RD 888SX Heavy Duty Dump Truck - Triple frame, 40 cubic yard, 64k rears, 24k front, Reman pedigree engine and mack rears, 8LL eaton trans, cold A/C, jake brake. **Reduced \$23,000 OBO. 386-208-5711.**



'09 Dodge 2500 - 5.9 Cummins diesel, A/T, 2x4, runs good, ready to go. **Call for info 863-447-0752.**



JD 510D - 4x4, ROPS, 4 cyl. diesel turbo, pin-on bucket, ROPS, shuttle shift, standard backhoe, 7,644 hrs. **\$16,500. 863-381-9857 Se Habla Español or 863-634-8282.**



Club Car - EZ Go, electric. **\$950. 863-381-9857 Se Habla Español or 863-634-8282.**



'05 JLG E450 AJ - Electric, 45'. **\$11,500. 561-767-6032**



Mulch Bagger - 90 bagger by Roto Chopper, diesel powered, ready to go to work. **\$12,500. 863-581-2540.**



Swansea - Stainless steel. **\$2,500. 863-381-9857 Se Habla Español or 863-634-8282.**



**287 SE Monterey Rd. • Stuart, FL
772-288-6221
carrollcollinspawn.com**



FUN SPOT TO STOP AND SHOP!

**LARGE SELECTION
OF FISHING
EQUIPMENT
RODS & REELS FROM
STAR, CROWDER, PENN,
SHIMANO, DIAWA,
QUANTUM, SHAKESPEARE
AND MORE.**

**CASH LOANS
QUALITY ITEMS
COME IN FIND SOMETHING
YOU WANT TO BUY AND WE
GUARANTEE YOU A GOOD
DEAL EVERY TIME**



Super clean Winchester Model 94 AE 30-30. \$759.94. Model 94 32W S \$948.94.



Deal of Paper - Glock 30 4th generation or Glock 36 4th generation. \$389.99+tax.



6'x10' composite material floor, wind guard 5'x6" tall tailgate, spare tire, good tires. \$1,899.

**LAYAWAY AVAILABLE WITH
20% DOWN ALL ITEMS IN STORE
WANTED! GUNS - CASH PAID FOR
GUNS, COINS, TOOLS & GOLD**



'05 Harley Davidson 88 Cl. 1450 c.c., King custom FLHRS, V-Twin carbureted engine, 34,080 miles, Vance and Hines pipes. **Reduced \$5,999.99 OBO.**



New Inventory arriving daily, deals and steals, we will buy your guns and gold.

SPECIAL SPRING PRICING!

Package Deals with a set of tracks and sprockets for compact track loaders and excavators

**Starting at \$1,316
Call today for your prices!**



FREE local delivery to office and worksite



New Replacement Sprockets and Tracks For Compact track loaders. Starting at \$275.

772-260-0287 • jeff@ihequipment.com

MACHINERY SALES



Used Wire Rope (Steel Cable) - American made, sizes 7/8" - 2", very good cond. Call for pricing.



JCB Telehandler 520 Needs TLC. \$10,500.



'88 Caterpillar 980C Wheel Loader - EROPS, 3406 engine, A/C, 1 owner, well maintained, manuals, 26.5x25 tires. \$41,500.



Grove Crane RT630 - Ex US Army Corp of Engineers, low hrs., Cummins power, hook block, complete set of manuals. \$36,500.



YOUR NEW KIOTI DEALER OF SOUTH FLORIDA

located in Fort Pierce 5 miles west of I-95

These Tractors Come With A 6 Year Warranty - Unlimited Hours.

0% financing for customers that qualify.

Free Loaders on Select Models

See dealer for details

THOMPSON TRACTOR CO.
15601 Orange Ave. • Ft. Pierce, FL 34945
772-460-9040 • thomtrac@live.com

3001 E. Main St. | Pahokee, FL 33476 | 561-924-2000

**1303 ANGLE ROAD • FT. PIERCE, FL 34947
772.461.2222 | JOEY: 772.979.2223**



2ND CHANCE SALVAGE



**Roll-Off Service Available by L.C. Waste
Call Joey 772-979-2223**

**WE BUY SCRAP AUTOS, APPLIANCES & STEEL
NOW OPEN MON-FRI 8AM - 4PM • SATURDAY 8AM - 12PM**

WE BUY SCRAP SEMI'S • FARM EQUIPMENT • BARGES ETC.



DT 466 - 360

Diesel engines, some running, some cores starting at \$1,200.



'22 CAT D1 LGP

ID# Cat 000D1 EXKL00679, has 4 yr. powertrain warranty or 4K hrs, like new cond., 6 way blade. \$139k.



WE BUY SCRAP SEMIS AND EQUIPMENT



WALMART TAKE OFFS

Low pro's and some 11.00-22.5. \$40-\$100.



**TAKE OFF FLAT BEDS
AVAILABLE P.O.R.**



'17 TANDEM REAR SET

Air ride very low miles. \$3,000.



FORKS AVAILABLE

5' to 8'. Quick attach and Q.A racks avail. Call for price.



ALUMINUM MERRITT HEADBOARD

80" wide. \$600.



BACKUP GENERATORS

4 cyl Cummins diesel, power industrial MQP601V- MQP 80 IV, under 500 hrs, 60and 80kw. Starting at \$7,500.



BLACK STONE

OTR equipment tires and wheels, 39x15-22.5, 9 hole wheels came off manlift. \$1,000.



ANCHOR CHAINS FOR SALE

50¢ per pound.

NEW FORD CHASSIS AT LOW PRICES! CALL FOR LOWEST PRICE



SELLS NEW & USED TRUCKS FOR LESS!



'23 Ram Pro Master Vantel - 34' working height, brand new, with warranty. \$129,900.



'03 Freightliner - Altec Digger Derrick, single cab, bucket, ground and remote controls, 130,000 miles, auger included. \$38,000.



'12 Ford F-750 XLT Super Duty - Manitex SC 62, only 100,000 miles, Cummins diesel, like new. \$115,000.



New 2023 Ford Chassis IN STOCK. Call for pricing and availability.



Misc. Steel Flatbed - Many sizes available. Call for prices.



'07 International 7300 - 89K mi., 65' Altec with material handler, 4x4. \$45,000.



New Venturo ET 12KX and 18KX - Wireless remote, in stock. Call for price.



Brand New Utility Bodies. Call for pricing.



20' Steel Car Carrier - Roll back w/wheel lift, need 120" C.A. light bar and tool boxes. \$35,950. Installed \$41,950.



'23 Ford F-350 - Crew cab, diesel, 6.7 powerstroke, 4x2. Call for price and info.



Security Tower Rentals - Call for info.



Reading Utility Body - Classic II, 108", fits 60" C.A. single wheel truck, has some minor damage front left corner. \$3,900.



'21 Crysteel 9' Contract Dump Body - Comes with built in dump hoist electric over hyd. \$5,900. Install extra.



NEW 12' Switch-N-Go hoist w/12' roll off dumpster and flatbed - Call for pricing.



New 43' Aerial Lifts in stock Call for pricing.



'23 Ford F350 Cascadia - Single rear wheel, 35' telescopic aerial lift. \$116,900.



Venturo Van Crane - 1,000 lb cap., 64 ft. lbs. crane rating, 6' telescopic extended boom reach, 4'6" stowed boom length, 220 lbs., winch 12V DC, 1.3 hp motor, 25.5 fpm. \$5,500 installed.



NEW Versalifts in stock - Ready to mount. Call for pricing.

4850 Orange Avenue • Fort Pierce, Florida 34947
772-461-6056 • 800-226-5056 • www.stamm-mfg.com

WE ARE MORE THAN JUST TRAILERS! FOLLOW US ON FACEBOOK!
 Quality New and Used Equipment Since 1987 **NO TEXTING!**
MORGAN TRAILERS, INC. - 941-776-1444

PLEASE CALL BEFORE COMING TO DUETTE. FOR MORE INFO, CALL OR E-MAIL MORGANTRAILERS@GMAIL.COM



USED Pemberton Wheel Loader Rake - 9.5'W, 9' at tines, JRB coupler, good condition. \$7,000.



48" Aluminum Header Pipe - 10' long, 4 available. \$2,000 each.



NEW Skid Steer QT Wolverine Ripper 5'W tines/comb. 6 tines, Overall 6'W. \$1,200.



Grapple Rake - JRB coupler, 116"W, 104" at tines, excellent condition. \$15,000.



NEW Storage Container - Cargo box, side door & window, overall: 6'H x 68"W x 88"L. \$2,900.



JRB 418 Root Rake - 10', fits JD 644-K. Excellent condition. \$7,000.



102" Push Blade - Excellent condition, 24"H, 93" CTC on mount arms. \$900.



'05 34' Glass Body or Granite, Precast Body - S/A semi trailer, good condition. \$6,000.



NEW Surplus Pallet Racking - 48"Hx8"Wx42" deep, 15 uprights, 20 crossmembers. \$2,000 for all.



Wheel Loader Forks - 8' W carriage, 6' forks, JRB416 coupler. Excellent cond. \$7,000.



NEW Heavy Duty 70" W Skid Steer Root Rake. \$2,250.



CAT Wedge Style Forks - Like new, 8' wide carriage, 6' long forks, Fits CAT 950 & up. \$12,000.



New 8" CAT Brand IT Loader Bucket - Fits CAT 430, 440, 450, 1.75 yard capacity. \$3,500.



'14 Stoughton 28' Pup Semi Trailer - Like new door. \$5,000.



Used 3pt 8' Box Blade with teeth, Hiniker, excellent condition. \$1,200.



Bucket HD CAT 305 - 306. 45mm pin, 12"W & 18"W available. \$1200.



New Land Honor Adapter Attachment - Adapts skid steer to 3pt hitch. \$750.



CAT Wheel Loader Forks - Good cond, 6' forks & 8'W frame fits CAT 950. \$4,000. 5' forks & 7'W frame fits CAT 924, 928, 936, 938. \$3,500.



New 60" Skid Steer Double Cylinder Root Grapple. \$1,850.



NEW Land Hero Thumb - 10"x35", for mini excavator. 10 to 15K cap. \$1,000.



NEW Hitch Disc - Harrow, 3pt., 18" blades. West Valley. \$2,200.



NEW 68" Rock Bucket - QT, quick attach. \$1,600.



Like NEW Excavator Ripper Attachment - 100mm pins, CAT 336-D or JD 350, 48"L, Wt. 1800#. \$3,500.



Scarifier Attachment - 8 shanks, 80"W, mount brackets. Good cond. 2 available. \$600 each.



NEW 48" Skid Steer Forks & Carrier. \$950. NOW \$900!



Like NEW Excavator Compactor - 36"W, 4 compaction wheels 36" dia. CAT 320 or JD 2-300. 80mm pins. \$4,900.



NEW 48" Skid Steer Forks & Carrier. \$950. NOW \$900!



New 60" Skid Steer Double Cylinder Root Grapple. \$1,850.

Our New Website with More Pictures and Prices!
www.morgantrailers.biz



Q26353 - '19 Ford E-350 16' Hi Cube Van - 6.8L V10 gas, auto, A/C, 113k miles, cruise, AM/FM radio, pull-out ramp, step bumper, hitch, LT225-75R16 tires, 12,500# GVW. **\$25,900.**



14565A - '09 Freightliner M2106 - 12 Bay Beverage Body, ISC Cummins 260HP, 6 speed, A/C, 253K miles, cruise, air brakes, 295-75R22.5 tires, 33,000# GVW. **\$19,900.**



Q26360 - '20 Isuzu NRR - 16' van body, Tuk-A-Way lift gate, 5.2 litre diesel, 215HP, auto, A/C, 90k mi, P/W, P/L, cruise, 225-70R19.5 tires, 19,500# GVW. **\$48,900.**



14642 - NEW '24 Isuzu NPR HD - 20' van body, 36" step saver curbside door, 6.6L V8 gas, auto, A/C, cruise, P/W, P/L, roll-up rear door, step bumper, 225-70R19.5 tires, 14,500# GVW. **\$69,957.**



3" Strap and Ratchet - \$27.47.



Q26239 - '06 International 4300SBA - MedTec ambulance/rescue body, DT466E diesel, Allison auto, A/C, 148K mi, Air-Ride susp., hyd. brakes, 255-70R22.5 tires, 27,500# GVW. **\$23,900.**



NEW '24 Isuzu NPR HD Crewcab - 18' Open Landscape Body, 6.6L V8 Gas, Auto, A/C, cruise, P/W, P/L, AM/FM CD radio, 225-70R19.5 tires, 14,500#GVW. **\$74,997.**



Q25731 - '97 John Deere 850C Dozer - OROPS, 6 way blade, runs but needs some work. **\$21,900.**



Q26373 - '07 International 4300 - 11' utility body, DT466E diesel, Allison auto, A/C, 110k miles, trailer wet kit, air compressor, air-ride, air brakes, 265-70R 19.5 tires, 30,000# GVW. **\$35,900.**



2" Strap and Ratchet - \$23.38.



Q26335 - '15 Ford F750XL Valew 2,000 gal. Truck - 6.7L Cummins, 6 spd, A/C, 10K mi, cruise, 5 cab controlled sprayers, 3" water transfer pump, air brakes, 11R22.5 tires, 25,999# GVW. **\$72,900.**



Q26265 - '14 Isuzu Reach 14' Utilimaster Stepvan - 3.0L diesel, 150HP, automatic, A/C, 50K miles, cruise, LT215-85R16 tires, 12,000# GVW. **\$28,900.**



Q26284A - '22 Sure-Trac 7 ton 8.5' x 22'+4' Deckover Equipment Trailer - LED lights, HD 12K dropleg, self cleaning dovetail & 5' ramps, ST235-80R16 tires, 15,000# GVW. **\$9,295.**



Q26367 - '17 Isuzu NPR HD Super Lawn Truck - 12' enclosed vancouver body, debris side dump, 6.0L V8 gas, auto, A/C, 127K mi, P/W, P/L, hyd. ramp, 225-70R19.5 tires, 14,500#GVW. **\$37,900.**



Mighty Mesh Tarps - 16" Call for pricing.



14595B - '06 Isuzu HVR - 24' van body, Tuk-A-Way liftgate, 7.8L Duramax diesel, Allison auto, A/C, only 28K mi., cruise, air brakes, 11 R22.5 tires, 31,000#GVW. **\$37,900.**



Q26281 - '09 Ford F650XL 18' Flatbed - National 500E2 crane, 18 ton cap., 71' reach, 6.7L Cummins diesel, Allison auto, A/C, 41K miles, air brakes, 11 R22.5 tires, 26,000# GVW. **\$78,900.**



'19 Hino 268 - 26' Van Body w/ Tuk-A-Way Liftgate, 6cyl. Hino Diesel, Allison Auto, A/C, 249K miles, cruise, AM/FM radio, pull-out ramp, air brakes, 11 R22.5 tires, 25,950# GVW. **\$47,900.**



14625 - NEW '24 Isuzu NPR HD - Cab & chassis, 6.6L V8 gas, auto, A/C, cruise, P/W, P/L, AM/FM CD radio, keyless entry, 109" WB, will fit 12' body, 225-70R19.5 tires, 14,500# GVW. **\$54,719.**



Rotella T4 SAE 15W-40 Engine Oil - 5 Gallons. \$98.95.



Q26319 - '17 Trail-King TKB0HT-533 - 53'x 102" tri-axle lowboy trailer, 40+ ton cap., hyd. beaver tail, hyd. winch, air-ride, alum. wheels, 235-75R17.5, lift tires, 255-70R22.5 tandem tires. **\$68,900.**



14558A - '18 Isuzu FTR - 18' Stake Bed, Energy Absorption System/Valtr SS180 Attenuator, 5.2L Diesel 215HP, Auto, P/W, P/L, cruise, arrowboard, air brakes, 11 R22.5 tires, 25,950#GVW. **\$99,900.**



Q262339A - '14 Isuzu NPR - 20' van body, 6.0L V8 gas, auto, A/C, 124K miles, cruise, P/W, P/L, AM/FM CD radio, step bumper, LT215-85R16 tires, 12,000# GVW. **\$32,900.**



Q26080A - '08 Mitsubishi FK200 - 18' Morgan body, Carrier Transcold Supra 644 reefer unit, 7.5L diesel 243HP, auto, A/C, 218K mi., P/W, P/L, cruise, 225- 70R19.5 tires, 19,850#GVW. **\$19,900.**



LED Stop & Turn Tail Light Kit. \$15.95



Q26355 - '13 Freightliner M2106 - 12' stake bed, AutoCrane 3203PRX, 6.7L Cummins, Allison auto, A/C, 188K mi, P/W, P/L, pintle hitch, air brakes, 11 R22.5 tires, 35,000# GVW. **\$39,900.**



Q25967 - '99 Pierce Quantum Fire Truck - 12.7L Detroit 60 Series, 430HP, Allison auto, A/C, 125k mi., 4 passenger seating, air-ride susp., air brakes, 42,740 lb. GVW. **\$25,900.**



'23 Econoline AB0720DE 7 Ton Equipment Trailer - 5' ramps, chain storage, locking lid, (2) 7,000# axles, LED lights, electric brakes, 235-80R16 tires, 16,100# GVW. **\$8,295.**



'23 Econoline DP1025DE Dual Tandem 10 Ton 25' Equipment Trailer - Chain storage, locking lid, (2) 10,000# axles, LED lights, electric brakes, 235-80R16 tires, 25,500# GVW. **\$13,295.**



Plastic Chrome Nuts - 1.5" or 33mm. \$13.99 (10 Pack)

DELAND TRUCK CENTER

1208 South Woodland Blvd. DeLand, FL 32720 | Truck Sales: (800) 342-0880 | Parts: 386-736-3224 | Fax: 386-738-1452

www.delandtruckcenter.com - We Ship Anywhere!

HABLAMOS ESPAÑOL PREGUNTA POR WILLIAM SOSTRE - 386-479-3067



'24 Econoline DP2027DA Dual Tandem 20 ton 27' Equipment Trailer Dual 2 speed jacks, chain storage, Oak decking, LED lights, (2) 20,000# axles, air brakes, 215-75R17.5 tires, 48,000#GVW. **\$28,995+12%FET.**



John Deere 2020A - Toro Multi Pro 1200, cushion spray rig. Parts machine. \$1,500.00. You pick. 863-381-9857 Se Habla Español or 863-634-8282.



Ford Sod Harvester - 3 cyl diesel, 2WD. \$12,500. 863-381-9857 Se Habla Español or 863-634-8282.



John Deere 510D - 4x4, 4 cyl, turbo diesel, 7600 hrs, pin on bucket, reg hoe, good rubber. \$16,500. 863-381-9857 Se Habla Español or 863-634-8282.



Ford 4630 3 PT-PTO Grade Tractor - 2 HYD's on rear for box blade, up-down and angle for cutting ditches work ready. **Reduced \$10,995. 772-460-9040.**



22' Aluminum Ramp - With handrail, 40" wide. \$1,800. Call 863-581-2540.



Top Cat Skid Steer Grader Blade - brand new. \$3,500. Call 863-581-2540.



Military Trailer - 5,750 hrs., max load 9.00' 20 6 lug. \$1,500. Call 863-381-9857 Se Habla Español or 863-634-8282.



20' Alumne Beavertail - 1,000 lbs of 6061-T6 alum., large 8'x54"x36" crew box, seats 4, 4 storage areas, 1 under seat (8'x16"x13"), 2 under foot (8'x10"x36"), 2 under body (6'x18"x18"), Two 2 place hand held storage racks, 12'8" or 152" before beavertail, beavertail 53" or 4'4", ramp 63" or 5', 177" wheelbase, 32" frame. 561-718-6603.



Ford 3000 - 3 cyl diesel, 3 pt and pto, 1 remote, R:13.6-28, 100 gal. spray tank. \$4,500. Call now 863-381-9857 Se Habla Español or 863-634-8282.



Irrigation Pipe. \$1 per foot. 863-381-9857 Se Habla Español or 863-634-8282.

TO PLACE AN AD AND GET YOUR STUFF SOLD CALL 772-473-7910 OR EMAIL US TODAY AT OSEEKM@GMAIL.COM

HIGH CUBE CONTAINERS A+ CONDITION!!!!



863-665-4459
service@ATR1.net



**High Cube Used Containers in Excellent Condition
We Deliver to All of Central FL!**

863-665-4459 service@atr1.net



'92 International S4900 - Roof dump, runs good. \$9,500.



'07 IH4300 Septic Truck - 1,500 gal, runs great. \$25,000 OBO x 2.



'15 Isuzu NQR - Bad engine. Call for parts pricing.



'20 F650 - 7.3 and 5 speed. Call for parts and pricing.



'07 Pete 385 - C-13, 10 speed, runs good. \$18,000.



International DT466 - 1 axle tractor, Allison. \$8,500.



'92 International S4900 - Crew cab, air brakes, auto. trans. \$9,500.



'99 F Series - Knuckle boom. Whole or call for parts.



'04 C7500 - C7 & 6 spd, 20' flat dovetail, whole or for parts.



'08 FL Business - Mercedes MBE4000. Call for parts and pricing.



'06 C7500 - Isuzu engine 6HK1, whole or for parts.



Mack 676 Engine - \$4,000 exchange.



'04 CH Mack - Call for parts and pricing.



'96 International 8200 Hood. \$1,850.



Ugly '84 L8000 IMT Boom Truck - \$9,500.



'03 Dodge 1500 - 4x4, gas 290M miles, runs, fixer upper. \$2,500.



'11 Prostar - Runs good, Maxforce 11, whole or parts.



'00 International 9200 - Day cab, ISM Cummings engine, 10 spd trans. Call for parts pricing.



'14 ISX-15 Cummins Engines - Whole or parts.



Ford E350 Box Van - Diesel, runs good, needs love. \$3,500.



'06 Peterbilt 335. Call for parts.



FL '02 Bucket Truck - Runs good. \$9,500.



'00 Mack Vision. Call for parts.



'94 International S4900 - Roof dump, runs. \$7,500.



'06-'12 Morgan Refrigerated Bodies w/Carrier units. 10-14' several in stock.



'89 International 27' Flatbed Truck - Runs good. \$10,500.



'05 Crew Cab F450 Flatbed Truck - Call for parts & pricing.



'04-'06 Detroit 14L Engines - Whole or parts.



'04 Peterbilt 330. Call for parts.



'98 International 4900 - Tandem axle, flat bed dump, engine problem. \$8,500.



'95 Mitsubishi Fuso Flatbed - 4 cyl. diesel, auto. \$5,500.



Freightliner FL70 - CAT3126 250HP, 7 speed trans. Call for parts pricing.



Engines - All brands. Call for pricing.

DELAUTO USED TRUCK PARTS, INC.

TRANSMISSIONS, ENGINES, HOODS, DRIVE SHAFTS, DIFFERENTIALS, AND MANY OTHER ITEMS.

380 S.R. 29 • Felda, FL 33930 • Tony: Office - (863) 675-7788
Cell - (305) 495-7973 • email: delauto48@gmail.com

WE ALSO SELL TRUCKS: RUNNERS & FOR PARTS • WE SELL FLAT BEDS AND VAN BODIES



'02 Isuzu FTR - Call for parts pricing.

Bob Dean Supply, Inc.

Power Transmission / Industrial Supplies / Pump Sales /
Steel Sales / Machine & Fabrication Shop / Pump/Motor Repair

HARDOX® WEARPARTS

Bob Dean Supply is now a HARDOX Wearparts Center!



Stocking 1/4" through 1-1/2" HARDOX AR450
Large Selection of Mulch Grates In Stock
Quick Turnaround On Custom Grates

For Quotes, email us at
hardox@bobdeansupply.com

www.bobdeansupply.com / (800) 282-8378 / sales@bobdeansupply.com

WE DELIVER: Lee, Collier, Charlotte, Hendy, Glades, Desoto, Sarasota, Manatee, Highlands, Okeechobee,
Saint Lucie, Palm Beach, Martin, Polk Counties



'20 GMC 2500 Cargo Van - 6.0L V8 engine, automatic trans, 91,875 miles, cold A/C, backup camera. **\$29,500.**



'03 International 9200I - Day cab, ISM Cummins, 10 spd. trans, 436k miles, cold A/C, good tires, clean FL truck. **\$23,500.**



'10 Mack Pinnacle CXU613 - MP-8 engine, 10 spd. trans, 414k miles, 455HP, mid roof sleeper, all Alcoa alum. wheels, 65% rubber, runs good, road ready. **\$35,500.**



'01 Boulder Fleetwood - Cummings motor, 97,000 miles. **\$22,800.**



'78 Peterbilt - 3402 CAT, 750 Holes wrecker. **\$56,000.**



'12 Pete 384 - Pacar engine, 10 spd. trans, good rubber, 883k miles, clean truck, road ready. **\$33,500.**



'92 Featherlite 1010 - 48' x 102" flatbed trailer, combo, air ride, fixed suspension. **\$13,250.**



'02 Kalyn Siebert Drop Deck Trailer - 52' x 96", 4" dovetail, 6' ramps, good rubber, steel deck, road ready. **\$25,500.**



'08 Ram 5500 - 4x4, 6.7 Cummins, 117,021 miles, Owens utility box. **\$19,750.**



'01 Freightliner Century - Day cab, 12.7 Detroit, 10 spd. trans, 693k miles, 2 new steer tires, runs good, road ready. **\$19,500.**



Moffitt Forklift - Kubota engine. **\$13,500.**



'94 GMC Frameless End Dump Trailer - 39'L x 96"W x 60"H, alum. box, tandem axle, air ride, liner, roll tarp, grain door. **\$26,500.**



240 CRESTMORE DR. | LAKE PLACID, FL 33852

(863) 465-1713

Business Hours: Mon. - Fri. 8AM - 6PM | Se Habla Español

UNCLE TONY'S U-PULL-IT

OPEN 7 DAYS A WEEK -

Inventory Changes Daily
Hundred of Vehicles
Top Dollar Paid for Your Unwanted Vehicle
Bring Your Own Tools & Pull It!

18 or older must have picture ID. If under 18, must be accompanied by parent or legal guardian with ID

Credit Cards: \$20 Minimum Parts Purchase
Admission Free \$2.00 Price List Free
Most Parts Under \$100

772-595-0601
3685 North US 1, Fort Pierce, FL 34946








Assorted Front & Rear Ends - 1/2 ton - 2 ton. Call for info and price. Call 772-287-2060.



Used Loader/End Dump Tires 23.5 R 25 x20.5 R25. **Starting a \$500 and up.** 772-201-7783.



Cat 235C Excavator - Manual thumb, runs and works. **\$22,000.** 863-581-2540.



Advance - GL 283A 235/75R 17.5 LR/H, 16 PLY. **\$209.95** Call 772-201-7783.



'89 32' Park Model - 32' x 12', 1 bedroom, full bath, kitchen, cold A/C, clean unit. **\$15,800.** Call now 863-465-1713.



6 Lug 20" Dual Wheels. \$50- each. **\$40 each.** 772-201-7783.



'23 JD - 200 hrs, loader, 4x4, 90HP. **\$65,000.** 813-244-7253 or 813-626-4554.



EZ Go Electric Cart. \$950. Call 863-381-9857 Se Habla Español or 863-634-8282.



New Skid Steer Leveler - 6' wide. **\$950.** 941-776-1444. NO TEXT.



Ti Brook Aluminum Dump Trailer - Camel back susp., 11 R24.5. **\$9,500.** 863-381-9857 Se Habla Español or 863-634-8282.



Turfco CR10 - Pin-on, pull behind, hydraulic driven, 4 cubic yards. **\$4,500.** 863-381-9857 Se Habla Español or 863-634-8282.



AFT T45 Trencher - PTO driven, 3 pt hook up. **\$10,000.** Call now 863-381-9857 Se Habla Español or 863-634-8282.



48' Mobile Home - 2 rooms, 1 bath and kitchen, pull behind. **\$9,500.** 863-381-9857 Se Habla Español or 863-634-8282.



Cat D3C - 4 cyl, diesel. **\$22,500.** 863-381-9857 Se Habla Español or 863-634-8282.



6' Bush Hog - Heavy duty. **\$850.** 813-244-7253 or 813-626-4554.



Ford 755B - 4WD, 4 cyl. diesel, backhoe, shuttle shift. **\$17,500.** 863-381-9857 Se Habla Español or 863-634-8282.



Hyd. Grapple. \$3,500. Call now 863-581-2540.



Q.A. Auger SK 250H w/rock bit. \$4,500. 863-381-9857 Se Habla Español or 863-634-8282.



Ductile Pipe - 20' x 30", good condition. \$700 each. Call today 941-776-1444. **NO TEXT.**



Goodyear 16.9x24 Industrial Traction Lug. \$500 each. \$950 for pair. 772-201-7783.



12.5 80x18 Titan R-4. New. \$129.95 each. 772-201-7783.



Walkway Grating - Bundle of 22 pieces, 20'L x 21"W. **\$3,500** for all. 941-776-1444. **NO TEXT.**



Pemberton 9' Root Rake - Pin-on. \$3,500. 863-381-9857 Se Habla Español or 863-634-8282.



Barth RV - Great project, no leaks in roof. \$2,500. 863-381-9857 Se Habla Español or 863-634-8282.



Squeeze Chute - New floor, ready to go. **\$2,000.** 813-244-7253 or 813-626-4554.

Henderson's
CONTAINERS
Shipping • Storage • Refrigeration

8' x 20'
8' x 40'
Offices • Camps • Houses
Secure • Insulated

Lake Wales, FL & South Bay, FL
561.261.9862
hendersoncontainers.com

Established 1946

TIME TO MOW! BIG SPRING SALE!

\$2,000 OFF all 12' to 15' Titan Flex Wing Mowers. 5 year limited warranty.
10% OFF all Titan Rotary Cutters and Implements. Financing available.




THOMPSON TRACTOR CO.
15601 Orange Ave. | Ft. Pierce, FL 34945 | 772-460-9040 | ThompsonTractorCo.com

SUSPENSION • TIRES & WHEELS • PERFORMANCE TRUCK EQUIPMENT & ACCESSORIES

FARMBOY Custom Co.

"LOCALLY RAISED"

- Tool Boxes & Fuel Tanks
- Air Suspension Options for Ride Height and Load Capacity
- Leveling Systems
- Suspension Kits
- Trailer Hitches, Wiring & Brake Control Systems
- Mobile Audio Systems

In Stock Now: Custom Flatbeds Available



WHEELS & TIRES



60 Gallons



UWS



Kelderman



700 ROYAL COMMERCE RD. • ROYAL PALM BEACH, FL 33411 • 561-795-2165 • FARMTRUCKPARTS@GMAIL.COM



43x1600x20 & 27x8.50x15 Galaxys - Reduced \$500 for all. Call now 772-201-7783.



'19 Cat 259D - 1,925 hrs, wide trac, erops, cold A/C, backup camera, hyd. quick coupler, runs good, work ready. \$50,000. Call 772-485-8764.



New Holland TN70-A ZRM - 2WD, 3 cyl. diesel, 3 pt&pto, Kerman 2150, sod harvester, 8,076 hrs, 2 to choose from. \$15,000. 863-381-9857 Se Habla Español or 863-634-8282.



'02 Ford F-150 XLT - 4x4, 308,xxx miles, extended cab, gas. \$4,000. 863-381-9857 Se Habla Español or 863-634-8282.



'06 Dodge 3500 Van - 272xxx miles, diesel, Reading service body, compressor and fuel tank, reg cab, automatic. \$12,500. 863-381-9857 Se Habla Español or 863-634-8282.



'94 Ford Mustang Cobra - 5.0 Cobra engine, 5 speed trans, sounds good, original wheels, 86k miles, needs bumpers and headlights, convertible top, interior is in decent cond, engine is tight, no noise, runs good and drives like it should, needs TLC, nice Cobra. \$8,500. Call today 863-381-5112.



Large Slab Racks - For concrete/granite/stone. \$500 each. Call today 941-776-1444. NO TEXT.



Omni Mini Skidsteer - Q/A bucket, gas, mechanic special. \$1,750 OBO. 863-381-9857 Se Habla Español or 863-634-8282.



Kubota M4030SU - 2WD, 5 cyl. diesel, ROPS, lift arms, PTO, bush hog, 2445 QT loader, pin-on bucket. \$7,500. 863-381-9857 Se Habla Español or 863-634-8282.



Single Axle 9' Military Trailer Pintle hitch, drop down jack. \$950. 863-381-9857 Se Habla Español or 863-634-8282.



'89 International 8100 Asphalt 525008m - 4,705 hrs, road ranger, 9 sp LTA 10 Cummins engine. \$11,500. 863-381-9857 Se Habla Español or 863-634-8282.



Rayside GDT 410 - Pin-on, tandem axle dump trailer, electric over hydraulic, 4'x10' dump body. \$2,000. 863-381-9857 Se Habla Español or 863-634-8282.



Morbark 7600 - Cummins power, ready to grind, 250 tons/hr. \$325k. 1-800-FLAOKS.



'12 Bobcat T650 - Rubber tracks, V3307 Kubota diesel, OROPS, A/C capability. \$25,000. 863-381-9857 Se Habla Español or 863-634-8282.

SAND HILL ROCK QUARRY .LLC.

BASE ROCK, SCREENINGS, STABILIZER, SAND, FILL






7:00AM - 3:30PM
MON - FRI

FDOT Certified

772-971-8323

7660 NE 304TH STREET
OKEECHOBEE

CALL FOR AVAILABILITY OF 57 STONE AND 89 STONE



DESIGN SO SMART IT'S IN THE NAME.

Choose a battery that delivers. New Holland SmartStart™ batteries are innovatively designed with higher vibration resistance and heavier lead components so they do it all and last longer. When it comes to performance, we're always in charge.

MRC

FOR MORE INFORMATION ON NEW HOLLAND SMARTSTART BATTERIES, CONTACT US TODAY.

Group 31 Battery starting as low as: **\$115.46**


THOMPSON TRACTOR CO.
15601 Orange Avenue
Fort Pierce, FL 34945
772-460-9040
ThompsonTractorCo.com
thomtrac@live.com

CNH INDUSTRIAL GENUINE PARTS

NEW HOLLAND AGRICULTURE

New Holland is a trademark registered in the United States and many other countries, owned by or licensed to CNH Industrial N.V., its subsidiaries or affiliates. www.newholland.com

OVERBUILT DESIGNS, LLC
- Galvanized Tube Trusses -



160 MPH Wind Load
Easy Free Standing Installation
Up to 50' Span on A-Frame
Up to 24' Span Lean To Trusses
Complete Barn Kits Available Also

P.O. Box 247 • Bell, FL 32619
352-949-4555
overbuiltdesigns@gmail.com

J&K Equipment
Lake Wales, Florida



We come equipped with a 53' Landoll trailer w/winch. We offer transportation for all your lowboy and recovery trailer needs. We can haul all your equipment running or not.

CALL 863-528-1689
e-mail: jkequipment@live.com

BOBCAT LAUNCHES FULL LINE OF LIFT TRUCKS



A BRAND YOU CAN TRUST AND A DEALERSHIP YOU CAN COUNT ON.

At WE Johnson Equipment we are proud to announce that we now carry a full line of Bobcat Lift Equipment from pallet jacks to stand up electric riders to 55,000 lb. internal combustion yard trucks and all backed by our 66 years of material handling sales and service support in the South Florida market.

Bobcat GC25S-9
Summer Sale
ZERO DOWN
\$539.00 Per Month
*Plus Tax for 64 Months
5,000 lb. Capacity, Cushion Tire
LPG-GCT K 2.5L, 189" Lift,
Side Shifter, Backup Alarm & Strobe Light

WITH A 5 YEAR 10,000 HR WARRANTY

For more information call 305-882-7000 or 239-210-0000
Offer good through June 30, 2024. Lease subject to credit approval.

W.E. Johnson
EQUIPMENT COMPANY
Serving Florida, Georgia & Bahamas

See us on the web at wejohnson-fl.com - or Join us on [f wej-fl.com/join](https://www.facebook.com/wej-fl.com/join)

Miami
7801 NW 52nd Street
Doral, FL 33166
305-882-7000 or 800-226-0211

Ft. Myers
2130 Park 82 Dr, Bldg. 2
Fort Myers, FL 33905
239-287-0314



'89 Dorsey Dump Trailer - 24' aluminum tub, 48" sides, hydraulic cylinder recently done. **\$17,500.**



'16 Freightliner Cascadia Midroof DD13 - Smart shift A/T, 698k mi., alum. wheels, very good rubber. **\$28,500.**



'13 Wade WHT - 51', 51x102 drop deck, alum. wheels, sliding winch, rails both sides, air ride, closed tandem, tool boxes, 6' alum. ramps. **\$21,500.**



'01 International 9200 - N14 Cummins 10 speed ,638k miles. **\$15,250.**



'11 International - Max CE Force 7 diesel power, Allison auto trans, A/C, 69k miles, runs good, 77 passenger. **\$13,500.**



'04 Kawasaki Wheel Loader - 70ZV, Pemberton rake, 13,168 hrs, 5.9 Cummins. **Reduced \$27,000 to \$21,500.** Has some blow by but runs strong.



'12 Volvo D13 - 425HP eco torque, 10 spd trans 557k mi, mid roof, all alum wheels, new steer tires, clean truck runs very well. **\$29,750.**



'01 Volvo VNL, VE 12 - 10 speed, 677k miles, single axle semi, sliding 5th wheel, headache rack, aluminum wheels, 75% rubber. **\$12,500.**



'06 Kenworth T600 Aerocab - C15 CAT, 13 spd. trans, clean truck, has all the bells and whistles, alum wheels, 75% rubber, runs good, road ready. **\$29,500.**



'18 Freightliner Cascadia - CA 1135LP, mid roof, DD13, 12.8 L, 450 hp, A/T DT 12-DA - 1550, HD 12 spd. direct drive, 12k front, 40k rear, 2.4/1 ratio 557k mi. **\$37,500.**



'98 GDane - 48 x 96 flatbed trailer, air ride. **\$10,500.**



'12 Freightliner Cascadia - Cummins ISX, 10 speed trans, aluminum wheels, good rubber, 448k miles. **\$37,500.**



00 Freightliner FL 70 - Mercedes engine, 6 spd air brakes, 33k GVW, pto driven air compressor, Bobcat Miller 250 welder, auto crane body, 6k boom, 6006H 16' body, 22.5 alum. wheels, very-deep rubber, work ready, outriggers, Reese hitch. **\$43,500.**



'06 Volvo VNL D12 - 465HP, 10 speed trans, alum. wheels, deep rubber, 968k mi., fixed axles, ready to work, more flat beds available. **\$14,500.**



'01 Ford F-350 - Triton V-8, 5.4 liter, A/T, new intake, 46k miles, tires 90%, 11' steel flat bed w/ headache rack, double reese hitch. **\$7,250.**



'15 Kenworth T680 - Class 8 High roof sleeper tractor, 516k miles, GVWR 52,000 lb, very deep rubber w/Alcoa wheels, Paccar running gear w/ air ride, new bumper and side skirt ordered, Paccar engine, 455 HP, 10 spd. trans. **Reduced \$49,500.**



'04 Etnyre RTN55 TD3 Blackhawk Lowboy - Tri axle, 55 ton, Honda GX390 pony motor, 24'6" well front or rear load. **\$41,500.**

M&M TRUCK SALES

2149 US HWY 27 S. • LAKE PLACID, FL 33852

863-381-5112 | MarcialMendez26@gmail.com

SE HABLA ESPAÑOL



**APPLE INDUSTRIAL SUPPLY CO.
& APPLE MACHINE & SUPPLY CO.
YOUR ONE STOP SHOP!**



NEW STATE OF THE ART LASER



CNC MILL

- SALES • SERVICE • INDUSTRIAL SUPPLIES • POWER TRANSMISSION
- **HYDRAULIC HOSE ASSEMBLY** • INDUSTRIAL HARDWARE • MACHINE SHOP & WELDING SERVICES
- WATERJET • HYDRAULIC CYLINDER REPAIR • METALS • ALUMINUM • PLASTIC & SHAFTING
- STAINLESS STEEL • ANGLE • CHANNEL • TUBE • PIPE, ETC...

Machine Shop: 772-466-9353 • E-mail: applewelding@outlook.com

Industrial Supply: 772-466-3800 • appledindustrial@aol.com

5900 ORANGE AVENUE (RT. 68) • FORT PIERCE, FL 34947

www.applemachineandsupply.com

SF INTERMODAL EQUIPMENT, INC

We will beat any competitors price. Call today for your quote!



SF INTERMODAL EQUIPMENT
239-5807208



SF INTERMODAL EQUIPMENT
239-580-7208



Wholesale and Retail Pricing

- 20' Containers
- 40'H Cube Containers
- 45'H Cube Containers

BEST PRICE ON USED SHIPPING CONTAINERS AND NEW UNITS IN FLORIDA PERIOD!

We Deliver All Over Florida State Wide • Located in Miami and Jacksonville

239-580-7208 | sfintermodal@gmail.com

SF INTERSTATE TRANSFER TRUCKING

WE ARE HERE FOR ALL YOUR TRUCKING NEEDS!

We have a 3 acre facility for your storage needs 24/7 to keep you moving.

We currently have a large fleet capacity to meet your needs. We offer dry van services, flat bed, step deck and heavy haul



We are located in central FL and offer our services state wide & nation wide

1445 Industrial Park Road • Mulberry, FL 33860

239-580-7208 • www.sfinterstatetransfer.com

WANTED

**Used Cattle Trailer,
Gooseneck Bumper Pull
with Title will Pay Cash
813-244-7253 or
813-626-4554**



John Deere 4 Cyl. Power Unit - PTO, instrument panel mounted on skid. Call or e-mail junkman048@gmail.com, or 863-531-6118. Sebring, FL. More pumps & power units available.



Used Aluminum RollaStep Work Platform - 8.5'L x 3'W x 54"H. Rails 42", overall good cond. May need wheels. \$1,000. 941-776-1444. NO TEXTS!



8' Case Disc - 18" blade, excellent shape. \$3,950. Call 863-381-9857 Se Habla Español or 863-634-8282.



35' (30' deck) Flatbed Trailer - Newly painted wood deck, many tie downs locations, bumper pull, Storage box on tongue, 2 spare tires, Trailer In great shape, has been covered, also with 2 1/2" ball and pintle hook slide in. \$3,000. Clear title. Call now 386-684-2918.



Duratech 3010 C15 Cat Excellent mill, low hours. \$149,900. FL OAKS. 1-800-FLA-OAKS.



Briggs and Stratton Generator - Propane, Vanguard 993cc, 10kw. Reduced \$3,495. 772-201-7783.



45' Truss Trailer - Hydraulic 5th wheel rollers, have brakes, extendable, good cond., ready to work. \$8,500. 863-581-2540.



150 Gallon Fuel Tanks - 320 gallon tanks, many available. Call for price. Call 863-381-9857 Se Habla Español or 863-634-8282.



JCB 407B - 4 cyl Perkins, OROPS, quick coupler, articulating loader. \$15,000. 863-381-9857 Se Habla Español or 863-634-8282.



P&H Omega S-35 Ton Crane - 27-85 boom length, 1,480 hrs., auto. trans., all terrain, 6 cyl. Deutz diesel. \$60,000. 863-381-9857 Se Habla Español or 863-634-8282.



Galion 118 Series B Road Grader - 13' center blade, 9,929 hrs, 6 cyl diesel engine. \$15,000. Call 863-381-9857 Se Habla Español or 863-634-8282.



Stock Trailer - Bumper pull tandem axle, 5 lug. \$3,000. Call 863-381-9857 Se Habla Español or 863-634-8282.



John Deere 310 - 2WD, OROPS, 4 cyl. diesel, reg. hoe. \$6,500. 863-381-9857 Se Habla Español or 863-634-8282.



Semi Trailer Dolly - 5th wheel plate, tires 900x20. \$2,000. Call 863-381-9857 Se Habla Español or 863-634-8282.



Case 430 - 2WD, diesel, real straight tractor. \$3,500. Call now 863-381-9857. Se Habla Español or 863-634-8282.



Exmark 48" Walk Behind \$1,750. Lightning 5 horse power chipper. Call for price 863-381-9857 Se Habla Español or 863-634-8282.



Mahindra 6000 - 774 hr, 4 cyl. diesel, 2WD, ML260 loader, lift arms, 1 pro, 1 remote, Rops. \$12,500. 863-381-9857 Se Habla Español or 863-634-8282.



Cat Skidsteer Forks. \$750. Call 863-381-9857 or 863-634-8282.



Gilson 11 CM Diesel Concrete Mixer - Former State of FLA. Call John 863-531-6118. junkman048@gmail.com.



Kubota L2550 - 2 WD, 3 cyl. diesel, ROPS, shuttle shift trans, 5,768 hrs. \$4,500. 863-381-9857 Se Habla Español or 863-634-8282.

Spray Foam Solutions
239-248-8391

WCE EQUIPMENT OF FLORIDA

3381 NW 18th St. | Okeechobee, FL 34972 | 2790 State Rd. 70W | Okeechobee, FL 34972

Buyer - C. Hale: 1-800-837-1914 | Sales - Charley: 863-801-6199 | Buyer - Matt: 513-623-1116

Edgar: 863-381-9857 | wce52@comcast.net | Hablamos Español

wce-equipment.com



Assortment of Skid Steer Attachments - Call for price.



'06 Ford F350 XL Super Duty Crew cab, 2WD, 178,923 mi, 6.0 power stroke. \$15,000.



Kubota M4980 - 2 WD, 5 CYL Kubota diesel, ROPS, shuttle shift, 1 remote. \$6,500.



John Deere 310B - 2 Buckets and forks. \$10,500.



Luster 721 XR-US 3 Gang Finish Mower - 3 pt, pull behind, pro driven. \$1,500.



'96 Chevy Kodiak - 319xxx miles, Cat 3116, 6 spd. \$9,500.



'96 Globe Lowboy/Detach - 50 ton, call for info.



Assortments of Buckets - Call for info.



John Deere 3225B - 3 cyl diesel, 2,393 hrs. \$4,500.



'04 Chevy 1500 - Regular cab, 2WD, 4.8L. \$3,950.



Clark GPS 20 - Propane, 3 stage, ROPS, 3500 lift cap. \$6,500.



Pull-Type Chopper - 3 to choose. \$2,500.



Prentice Grapple Body - G-RM. \$9,500.



Bushhog 3715 - Lots of life left, one owner. \$6,500.



Michigan 55GML. \$9,500.



Kubota B7510 - 4wd. \$3,500.



Turfco Intermatic III Top Dresser. \$1,500.



'94 Ford F250 - 2 WD extended cab, long bed, 8', 7.3, original paint, dual tank. \$4,500.



Assortment of Trailers - 1 ton to 35 ton. Call for info and pricing.



Kubota M4900 - 2WD, 2,205 hrs., one remote, 5 cyl. diesel, turf tires \$6,500.



Excavator Bobcats, JRB pin on, thumb available, some pin on some quick attach. Call for price.



Kubota L2550 - 2WD, 3 cyl. Kubota diesel, 3 pt and pto, 5,769 hrs, 2 to choose from. \$5,900.



Miscellaneous Grove Vehicles - Water tankers, 8,000 up etc. Call for info.



Woods TDP65 - 3 pt post hole auger. \$800.



10' Disc - Pin on 16" disc. \$6,500.



Wiederman Aerator Terra Sprayer XP - 6 pto driven, 3 pt hook up. \$6,500.



Six Row 30" Liquid Planter. \$6,500.



Black Tool Boxes x3. Call for price.



Ford F250 Super Duty - V-8 Triton, 2WD, 238,000 miles, crew cab. \$6,500.



7' Disc - 13 pt hook up, 2 gang 16" disc. \$700.



Utility carts call for info.



'12 Motovox MVX70 - Great bike. \$850.



Ford 7610 - 2WD, 4 cyl., diesel, Rops. \$10,500.



Misc. Carts, UTV's, Golf Carts. Many to choose from.



Conibear Spreader - Pin on hyd. drum. \$6,500.



Ford L90000 - Cat, diesel, single axle. \$6,500.



'95 Ford Van Bucket Truck - Auto, Baker bucket lift. \$3,500.



Landpride QH05 Subcompact Tractor - Quick Hitch. \$250.



7'x12' Landscape Trailer - Single axle, 2" ball. \$1,000.



New Holland L775 - 4 cyl. Perkins diesel. \$6,500.



Trail King Low Boy - Hydr ramps, very straight, ready to haul. \$15,950.



Q/A Mini Skidsteer Forks. \$1,000.



Pintle Hitch Dual Tandem Axle Trailer - Ramps, airbrakes. \$6,500.



Toro Reelmaster 33455 - 7 gang pull behind, pin-on, 16' 10" cutting width. \$6,500.



'06 Ford F350 XL Super Duty - 6.0 power stroke, 125,162 mi, auto, 2WD, dump. \$15,000.



Toro Groundmaster 4500D - 4WD, 4 cyl. diesel turbo, 7,664 hrs., 5 gang mower. \$6,500.



Bobcat T650 - 4 cyl., v3307 Kubota diesel, 2,802 lb. lift capacity, rubber tracks, OROPS. \$29,500.



John Deere 4650 - 2WD, 6 cyl, diesel quad range, 2 remotes. \$10,000.

TWO NEW LOCATIONS TO SERVE YOU!



Ford 340 2WD, w/loader, 3 cyl diesel. \$12,500.



MF 1020 - 2WD, 3 cylinder Perkins diesel, 2,229 hrs, 3 pt PTO. \$3,500.



Massey Ferguson - 35k, runs and works, original tractor. \$4,500.



10,000 Gallon Polytanks - Clean, no holes, in great shape. \$5,000.



Kubota G6200 - Diesel, 3CYL HST. \$1,200.



28' Livestock Trailer - Needs TLC, tires will hold air, tri-axle needs floor, pull it home. \$2,000.



Toro Workman 3100 - 2,680 hrs, gas, hydraulics. \$3,500.



Skidsteer Buckets, Rakes, Tree Booms and Forks. Call for prices.



3 PT Augers - Call for info.



Toro 6000 Series - 48" cut, 2,483 hrs, Kawasaki, gas. \$3,500.



Many Gas Power Club Carts to choose from. \$2,500 each.



3 PT Boom Sprayer - 200 gallon tank. \$1,950.



Farman Tractor - 2 to choose from. \$3,500.



Kaufman Car Hauler - Tri axle, 8 lug, 17.5. \$12,500.



Farmall B - Runs good, belly mower. \$3,500.



Ford F700. \$9,500.



JLG G6-42A - 42' boom, block forks, used everyday, 8,778 hrs. \$35,000.



40' Shipping Container with thumb trailer. \$1,500.



Sod Roller - 14' wide pinion, pull behind. \$3,500.



Tandem Axle 16' Enclosed Trailer - 25/16 ball, drop down ramp. \$2,950.



Kaufman Car Hauler - Dual tandem, 5th wheel, G/N hitch, 50' 3 car hauler \$10,900.



Ram 3500 - Hemi 6.4, heavy duty, crew cab, flatbed. \$30,000.



GMC C7500 - Eaton Fuller, 8 spd, Cat 3126, 330HP, 51,792 miles. \$15,000.



Kubota L2650 - 3 cyl. diesel, running, 3pt & pto, original paint, needs TLC, runs and works, loader mount, 2320 hrs. \$4,500.



Gallion 118 Series B - 9,929 hrs, 14.00-24 tires, 6 cyl. diesel. \$9,300.



TCM Forklift - \$4,500.



Shulte V 1280 Pull Behind Parts Mower. \$1,000.



500 Gallon Fuel Tank - Tandem trailer, pin on. \$1,000.



Fuel Tanks - Dollar a gallon. Many available.



Massey Ferguson 35 - 2WD, 3 cyl. Perkins diesel, lift arms, pto, 14.9-24R's. \$3,500.



Toro Pro 1250 - Gas motor, 5,223 hrs., 175 gallon tank. \$3,500.



'22 Sure Pull 40' w/Ramp - Tandem axle, 10k axles. \$15,000.



Ford 1920 - 4 cyl diesel, 2WD, 1 remote 3pt & pto, ROPS. \$6,500.



Large selection of floatation tires and wheels - Call for info. \$1,500.



Assortment of Utility Vehicles Call for info.



Club Car Carry-All - Many to choose. \$2,950.



Assortment of Root Rakes - Call for info.



Many Fruit Trailers to choose from. \$1,500 take your pick.



Citrus Goat - 6 cyl. International diesel, A/T, running and driving. \$6,500.



Komatsu WA 250 - 6 cyl. diesel, pin on bucket, needs TLC. \$9,500.



Pintle Hitch Trailer - Dual tandem axle, ramps 17' flatbed, 5' dove. \$4,500.



Assortment of buckets and rakes, grapples. Call for info. and price



John Deere 6410 - 4x4, 4 cyl. turbo diesel, 640 loader, quick attach, lift arms, pto, 2 remotes. \$15,000.



Utility Trailers - Few to choose from, size range 4 x 8, 5 x 8 etc, many to choose from. \$650.

BOBCAT LAUNCHES FULL LINE OF LIFT TRUCKS



A BRAND YOU CAN TRUST AND A DEALERSHIP YOU CAN COUNT ON.

At WE Johnson Equipment we are proud to announce that we now carry a full line of Bobcat Lift Equipment from pallet jacks to stand up electric riders to 55,000 lb. internal combustion yard trucks and all backed by our 66 years of material handling sales and service support in the South Florida market.

**WITH A
5 YEAR
10,000 HR
WARRANTY**



Bobcat G25N-7 Summer Sale ZERO DOWN

\$547.00 Per Month

**Plus Tax for 64 Months*

5,000 lb. Capacity, Pneumatic Tires
LPG-GCT K 2.5L, 189" Lift,
Side Shifter, Backup Alarm & Strobe Light

For more information call
305-882-7000 or 239-210-0000

Offer good through June 30, 2024.
Lease subject to credit approval.



Serving Florida, Georgia & Bahamas

See us on the web at wejohnson-fl.com - or Join us on [f wej-fl.com/join](https://www.facebook.com/wej-fl.com/join)

Miami

7801 NW 52nd Street
Doral, FL 33166

305-882-7000 or 800-226-0211

Ft. Myers

2130 Park 82 Dr, Bldg. 2
Fort Myers, FL 33905

239-287-0314



81,000 MILES

'98 Jeep Wrangler Sahara Edition - Was rolled w/minor damage mostly repaired, have driver fender and hood, replaced all suspension w/ 4" long arm kit, has a good FL title, 6 cyl, 5 speed, runs good, cold A/C. **\$4,500** OBO. 772-473-7910.

NOW OPEN - CALL FOR BEST DEAL!



NEW & USED GOLF CARTS

Gas & Electric

Financing as low as 0%

No Fees!

**Sales, Parts, Accessories,
Lithium Conversions
and more!**

2912 HWY. 710E

OKEECHOBEE

CALL: 863-357-7000

Adamspar-teekartz.com

yoder & frey

HEAVY EQUIPMENT AUCTIONS

KISSIMMEE, FLORIDA AUCTION

Thursday, June 6th @ 8:30am - Selling On-Site & Online!



2021 Komatsu PC80MR-5E0



Unused 2024 Machpro MP30
- choice



2017 Case 750M



Komatsu WA250-5



2015 JCB 506-36



2015 CAT TH414C



2016 Kubota SVL95-2S



17-18 Bobcat S650
- choice



2013 Terex TA9



2012 Sakai SV410



2012 CAT PM-12 Profiler



Kenworth T800 Dumptruck

Auction Address: 654 West Southport Rd, Kissimmee, FL 34746

FOR MORE INFORMATION, PLEASE CONTACT:

Joe Thurston: 407.388.4888 | Nick Gray: 850.508.7677

Sal Garcia: 786.878.0072 | Randy Whittaker: 321.403.3922

License No: AB3667

www.yoderandfrey.com



'16 Kobelco SK210LC

JRB quick detach, 46" bucket, hydraulic thumb, bottom is good, more digging than moving hours. \$102,000 OBO. 863-858-6293.

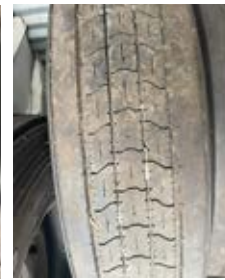
FOR SALE

USED TIRE EQUIPMENT

ROGER HOPSON: 772.260.0333



'14 Ford F250 - 4x4, 188k miles, fully equipped tire service truck. \$29,500.



Slightly Used Good-year - 275/70R225 RSA Steer. (2 avail) \$275 each.

New Dunlop SP384 - 285/75R245 All Position. (1 avail) \$275.

Used Goodyear G316 Endurance 11R225 Trailer Tire. (1 avail) \$175.

Auto/Lt Truck Tire Changer. \$1,000.

ROGER HOPSON: 772.260.0333

PLACE AN AD WITH US TODAY!

- Single Classified - \$35
- 5 Classifieds for - \$100
- 1/8 Page Advertisement - \$75
- 1/4 Page Advertisement - \$150
- 1/2 Page Advertisement - \$300
- Full Page Advertisement - \$600
- Monthly Subscription - \$35

All classified and ad prices are based on 1 month of service. Longer contracts are available. Includes website advertising.



FISHER & ROES AUCTIONEERS

Annual Spring Consignment Auction

FISHER & ROES AUCTIONEERS

Live and Online with EquipmentFacts.com

HEAVY EQUIPMENT - TRACTORS - FARM IMPLEMENTS - ATVS - TOOLS - ANTIQUES - VEHICLES & MORE...

PREVIEW, THURS MAY 23rd & FRI 24th - 10 AM - 5 PM
SATURDAY MAY 25th, 2024, REGISTRATION 9:00 AM AUCTION 10:00 AM

fisherandroesauctioneers@gmail.com
www.FisherAndRoesAuction.com
 Desoto County Fairgrounds,
 100 Heard Street, Arcadia, FL
license # AU 4390 / #AU5287 / #AB3990

Consignments Welcomed
Call: Jimmy Fisher 863-303-3527

TELEPHONE POLES

GREAT FOR BARNs, COW PENS, FENCE POSTS
ALL SIZES! 4' - 40' • 100'S TO CHOOSE FROM. \$3.00/FT
BROWN POLES \$1.00/FT. PICK UP OR DELIVERY AVAILABLE
Call Mike: 561-662-3001 or Dina: 863-634-0442



NATURE HOMES

LAND WORKS

863-214-5986

LAND CLEARING
EXCAVATING
BUSH HOGGING
GRADING
DEBRIS REMOVAL



Southern Specialty
Equipment, Inc

26003 W US Hwy 27, High Springs, 32643

877-366-5399

2014 Moffett, M55.4, 5500lb model including 4way option, 120" mast, Kubota 48 hp pre-emission engine. In excellent shape and perfect for lumber yard use. The four way function allows delivery with long dimensional lumber between tight spaces. We have one left that is available, with 925 hours. Excellent condition, and needs nothing.



Southern Specialty Equipment, Inc

SSEQUIP.NET

26003 W US Hwy 27, High Springs, 32643

877-366-5399

SALES & SERVICE

MADE IN THE USA

Now Florida Dealer for Donkey Forklifts



Burro Truck Carried Forklift



3K & 4K Series Truck Carried Forklift



4K Low Profile Truck Carried Forklift



5K Truck Carried Forklift

Truck and
Donkey packages
available!



WANTED

New / Used Farm & Construction Equipment

ANY CONDITION, CASH IN HAND



CONTACT "THE TRACTOR MAN"
(863)-273-3244



Robert Loeb
Dustin Loeb
rloeb81@gmail.com
454 SE Monterey Rd
Stuart FL 34984
Rubber Tracks
Hydraulic Drive Motors



\$9,500
OBO

'85 1835 BE Case Loader - Barn kept, second owner, 1,221 hrs. ~~\$11,500 OBO~~. 813-310-7919 or 813-677-0452.



Kubota L3130 GST - ROPS, 4WD, lift arms, 1 PTO, turf tread, 3 cyl. Kubota diesel. **\$6,500**. Call 863-381-9857 **Se Habla Español** or 863-634-8282.



Hitchhiker Piggy Back Lifts - 3 cyl. Kubota diesel, few to choose from. **\$4,500**. 863-381-9857. **Se Habla Español** or 863-634-8282.



'15 **BIG TEX 22GNHD - 40'** mega ramp, torque tube, hard to find. **\$14,500**. 863-381-9857. **Se Habla Español** or 863-634-8282.



Ridgid 60R-OS-48R-OS Tool Boxes. \$250 each. Call today 863-381-9857 **Se Habla Español** or 863-634-8282.



'14 **Ram 5500 - Regular cab**, 231,000 miles, 4x4, Cummins diesel, flat bed w/gooseneck hitch. **\$29,500**. 863-381-9857. **Se Habla Español** or 863-634-8282.



'06 **Chevy C4500 - Duramax**, diesel mechanic truck, auto trans. **\$8,500**. 863-381-9857. **Se Habla Español** or 863-634-8282.



International Spreader Truck 1,800 gal. tank, 22' booms, 10 spray heads, 6 cyl. International engine, diesel stainless. **\$19,500**. 863-381-9857 **Se Habla Español** or 863-634-8282.



Hyd. Muncher. \$3,500. Call now 863-581-2540.



John Deere 310 Loader Backhoe - 2WD, JD 4 cyl diesel, Orops, 9,385 hrs. **\$16,500**. Call 863-381-9857 **Se Habla Español** or 863-634-8282.



395/85R20 Military Take Offs Goodyear and Michelins on wheels. **\$250 each & up**. St. Lucie Battery & Tire. 772-201-7783.



Amida AL4000 Light Tower - 3 cyl., Kubota diesel, single axle, tow behind 1,999 hrs. **\$2,950**. 863-381-9857 **Se Habla Español** or 863-634-8282.



'01 **New Holland LB90 - Standard backhoe**, 24" rear bucket, forks on front bucket, 4x4, low hrs, original machine, runs good, tight machine. **Reduced \$28,500**. 772-460-9040.



9N Ford Tractor - Good tires, works great. **\$2,500**. Call now 813-244-7253 or 813-626-4554.



'12 **Mack CXU613 - Day cab**, interior is clean as can be, MP8, 415HP Eaton Fuller 10 spd, hi/lo, 562k, great tread all around, ready to work. 863-381-9857 **Se Habla Español** or 863-634-8282.



'95 **International 4800 - All wheel drive**, diesel DT408 engine, 24k miles, auto., rear aluminum body with tank. **\$14,000**. Call 305-720-7892.



Gravely Pro-Ride 260 - Commercial, 60" cut, Kawasaki 27hp, zero turn, LD3500. **\$3,500**. Call us today 863-381-9857 **Se Habla Español** or 863-634-8282.



Ford 5600 - 4 cyl. diesel, 2WD, OROPS, PTO & lift arms, 1 remote. **\$7,500**. 863-381-9857 **Se Habla Español** or 863-634-8282.



'22 Jayco 264BH Jay Flight SLX 8 - Brand new old stock, solar ready, outside speakers/refrigerator. **\$22,900.**



'15 Ford F 450 - 6.7L diesel, 65k mi., 11' Reading utility with work vice, brand new tires, 1 owner, fleet maintained. **\$47,850.**



'15 Ford F-350 Supercab - 4WD, 4 door, V8, 6.2L engine, 66K, 12K warn winch, factory body lift. **\$35,850.**



'18 Case TR270 Compact Track Loader - 4 cyl. diesel, new 78" bucket, 1,136 hrs., 74HP, Tier 4 quick attach, aux. hyd. joysticks. **\$44,900.**



'14 International Durastar 4300 Sewer Jetter - Maxxforce DT 7.6 L6 215HP with only 10k mi., Allison auto., 700 gallon water tank, 1,000' reel hose, all new tires, excellent cond. Call for price and financing.



'05 Sterling Acterra Road Tractor - MDHD, 28k original mi, 8.3L, Cummins diesel, 588 hrs, Allison 6 spd, auto, air brakes, 350HP, cld A/C, 33,000 lbs GVWR, PTO for dump trailer & equip, pintle hitch, wheel lock, trailer, brakes, all newer tires. **\$36,750.**

S&N AUTO LOCATORS - SNAUTOLOCATORS.COM

302 HATHAWAY ST. NW LAKE PLACID, FL 33852 | 863-465-0179 | CELL: 561-386-7329

WANTED

Your Used Equipment!

\$ Paying \$ Top Dollar!

863-214-1896

ASK FOR SEAN



'17 Honda Rancher Fourtrax 4WD - 105 hours, 582 miles, 42L engine, like new. **\$6,850.** Call 866-232-7312 or 863-465-0179.



Ty Crop MH-400 - hydraulic driven. **\$2,950.** 863-381-9857 Se Habla Español or 863-634-8282.



Loading Ramp - 7'x 35'. **\$7,500.** 863-381-9857 Se Habla Español or 863-634-8282.



37x 12.50 R 16.5 BF Goodrich Baja T/A Radials. 149.95 each. 169.95 mounted. 772-201-7783.



HR2 80' High Reach JLG. **\$25,000.** 863-581-2540.



Asst Poly Tanks - 500-6000 gal. 863-381-9857 or 863-634-8282.



Hester Baler - Hay rack, tiller. Best offer for all 3. 813-244-7253 or 813-626-4554.



'09 Morbark 6600 Woodhog C-32, new pumps, belts. Call 1-800-FLA-OAKS.



'22 Hawk 250 Dirt Bike - Runs good, low miles, FL title. Street legal. **\$950.** 772-473-7910.



Case W-18 - Blown motor, good 17.5x25. **\$3,000.** 772-287-2060.



24' Pontoon - Needs TLC. **\$2,500 OBO.** 772-473-7910.



Heavy Duty Alum. Louvered Commercial Doors 36" x 84". **\$300.** For info 772-473-7910.



'98 Mitsubishi Fuso FE-HD - 17' flatbed, Diesel A/T, 268k miles **\$7,500.** 863-381-9857 Se Habla Español or 863-634-8282.



10' Dingy - Polyurathane hull, have title. **\$800.** 772-473-7910.



Rotary Cutters - \$150 - \$500. 813-244-7253 or 813-626-4554.



'03 MB 1300 - 860HP. **\$275,000** In Ocala. Several to choose from. 800-FLA-OAKS.



14.3 x 28 BKT R-1. **\$300 each.** 772-201-7783.



16" Commercial Whirlybird Roof Vents. **\$75 each, all for \$200.** 772-473-7910.



6x16 Cattle Combo Trailer - New tires. \$4,500. 813-244-7253 or 813-626-4554.



JCB 520 Telehandler - Perkins engine, 4,700 hours. \$19,500. 863-465-1713.



International 3444 - 4 cyl., diesel 2WD w/loader, needs TLC. \$4,500. 863-381-9857. Se Habla Español or 863-634-8282.



Allegro RV - 36', one owner, 126,xxx miles, CATB126, 275HP, Allison trans, one slide out, freight, liner chassis. \$19,500. Call now 863-381-9857 Se Habla Español or 863-634-8282.



6x24 Cattle Trailer - Good condition, 14 ply tires. \$6,500. 813-244-7253 or 813-626-4554.



'78 Peterbilt - 3402 CAT, 750 Holes wrecker. \$56,000. Call today 863-465-1713.



'10 International Pro Star Premium Mid Roof - Cummins ISX 10 speed, crossfire air equalizer, sliding 5th wheel, mini splitter A/C unit, good rubber. \$21,500. Call 863-381-5112.



Selection of Excavator Rakes - Various styles & sizes. 941-776-1444. NO TEXT.

**TO PLACE AN AD EMAIL
OSEEKM@GMAIL.COM
OR CALL
772-473-7910
TO ADVERTISE!**

LAND SOLUTION
Forestry Mulching - Land Clearing
Stump Grinding - Debris Removal

CALL US TODAY FOR A FREE QUOTE!
Spanish: 239-398-7087 | English: 239-374-7154



'01 23' Seafox - 150 Johnson, trailer included, runs great. \$10,500. 772-577-8386.



Kubota Utility Special - 4x4, 5 cyl Kubota diesel, M4700, 4,002 hrs, shuttle shift. \$6,500. Call 863-381-9857 Se Habla Español or 863-634-8282.



Kubota M4900 - 5 cyl diesel, 4x4 shuttle shift, OROPS, 2506 hrs, utility special. \$8,500. Call now 863-381-9857 Se Habla Español or 863-634-8282.

4850

STAMM MFG. NOW CARRIES NEW VENTURO TRUCK MOUNTED CRANES CALL FOR INFO AND PRICE

<p>New Venco Dump Hoists in Stock. Call for pricing.</p>	<p>Terex Commander Digger Derrick Reduced \$7,500. Call for info.</p>	<p>'23 Ford Pickup Beds - With bumpers, 2 dually, 1 single, rear wheel. \$1,000 each.</p>	<p>New Tool Boxes - Steel and aluminum, multiple sizes in stock. Call for pricing.</p>	<p>16' Landscaping Body - w/dovetail and shovel box. \$5,000 OBO.</p>
<p>Aluminum Step Box - New, never used. Discounted \$200.</p>	<p>New Augers For Sale - 22". \$800 each.</p>	<p>New 16' Reading Flatbed - Bed only, no lights or headboard, steel diamond plate floor, stake pockets. \$2,500.</p>	<p>12' Dump Bodies In Stock. Call for pricing.</p>	<p>New Stahl Utility Bodies - Variety of sizes. Call for pricing.</p>

4850 Orange Avenue • Fort Pierce, Florida 34947
772-461-6056 • 800-226-5056 • www.stamm-mfg.com



ROOT RAKES - Multiple styles & sizes available, too many to picture them all! **Starting at \$2,500. 941-776-1444. NO TEXTS!**



Ford 3600 - 3 cyl. diesel, 3 pt pto. **\$6,500. 863-381-9857 Se Habla Español or 863-634-8282.**



'95 Mack Concrete Mixer Truck 10 yard, piloted budwheels, flywheel driven PTO, 4.25 floats, not a computer truck, T2080 max., torque trans. **Reduced \$17,500. Call 386-208-5711.**



'99 Isuzu - Standard cab, stray bed, automatic trans, diesel. **\$9,500. 863-381-9857. Se Habla Español or 863-634-8282.**



EXMARK - 60" Cut, Kawasaki, gas, 3,607 hrs., Lazar Z. **\$3,500. 863-381-9857 Se Habla Español or 863-634-8282.**



20' Morgan Body - Thermo-King V-500 refrigerated unit, electric stand-by, roll-up door, step bumper. **\$4,000. Call William at 386-479-3067.**



Q.A. Trencher. **\$3,500. Call now 863-381-9857 Se Habla Español or 863-634-8282.**



'06 4x4 Crew Cab TRx4 Off Road - Runs but needs TLC. **\$6,500. 863-381-9857 Se Habla Español or 863-634-8282.**



'04 GMC Sierra 2500 HD - 4x4, needs TLC, crew cab. **\$6,300. Call 863-381-9857 Se Habla Español or 863-634-8282.**



Cushman Turf Tracker - 3,688 hrs, hydraulic dump body, 3 cyl. diesel, 4 speed. **\$3,950. Call now 863-381-9857 Se Habla Español or 863-634-8282.**



'12 Mack CXU613 - Day cab, interior is clean as can be, rears have lots of tread, air ride, 435k miles, Mack MP8, 415HP, Eaton Fuller 10 spd. hi/lo, off the job truck, ready to work. **Call now 863-381-9857 Se Habla Español or 863-634-8282.**



Grove Crane - 18 ton DT466 motor, 4WD, 100' reach, crane motor is Detroit, comes with a J.B. track, needs TLC, both motors run and work, drove on to trailer. 8 new tires. **Call for price. 863-381-9857. Se Habla Español or 863-634-8282.**



Chevy 2500 HD - Single cab, service body, gas truck. **\$6,500. 863-381-9857 Se Habla Español or 863-634-8282.**



Centerline Curtains Inc. Tandem Axle Trailer. **\$4,500. 863-381-9857 Se Habla Español or 863-634-8282.**



Yokohama Geolandar - 10 ply LT265/75R, 16 X-A/T. **\$209.99 ea. 772-201-7783.**



Shuler Cattle Feeder - Works good. **Best offer. 813-244-7253 or 813-626-4554.**



Millermatic - 300 amps each, have guns, full bottle, 220 volts. **\$2,000. 863-531-6118. junkman048@gmail.com.**



Morbark 6600T - Extremely productive, excellent. **\$325k. 1-800-FLAOKS.**

KAWASAKI'S



'93 Kawasaki 80ZIII - EROPS, 3rd valve for long forks, heavy counter weight, 2000 Cummins engine, electrical problems only has reverse, many parts available. **Reduced \$14,900. 386-208-5711.**



'93 Kawasaki 80Z11 - Runs OK, 8.3 turbo Cummins turbo diesel, 6CT engine, many parts available. **\$19,500. Call 386-208-5711.**



'93 Kawasaki 80ZIII - Runs good, OROPS. **\$23,500. Call 386-208-5711.**



'93 Kawasaki 80ZIII - , A/C red dot, runs good, '06 Cummins engine, have parts, 2,500 hours. **\$23,500. Call 386-208-5711.**

CAT Dozer Engine for Sale - \$26,000
3306 D7G with bell housing and accessories

ABOVE 4 ADS PACKAGE DEAL - \$49,500



Coehring Bartam Gradall. **\$19,500. 863-381-9857 or 863-634-8282.**



PTO Genest - 35KW. **\$3,500. 863-581-2540.**



Cat D4H - Orops, 8256 hrs, Cat diesel, 4 way blade. **\$25,000. 863-381-9857 Se Habla Español or 863-634-8282.**



Ford 4000 - 2WD, 4 cyl. diesel, 2,400 hrs, 3 pt rear lift. **\$3,500. Call 863-381-9857 Se Habla Español or 863-634-8282.**



'99 Peterbuilt 330 Flatbed - Twin screw with roofing conveyor, very solid truck. **\$25,000. Call today 863-381-9857 Se Habla Español or 863-634-8282.**



185 CFM - Formerly a rental unit, John Deere powered, low hrs. **Call John 863-531-6118 or email junkman048@gmail.com.**

RALPHS PLACE

Is the fabric in your motorhome or vehicle flaking or just worn out?

CALL JOYCE 772-359-0595





BRP CAN- AM 400 - 4x4. \$6,500.
863-381-9857 Se Habla Español
or 863-634-8282.



**Trazano - Cr 915 11 R 22.5 14
PLY LRG. \$299.95. 772-201-7783.**



**Cub Car Turf Carryall 6 -
Longbed, gas. \$1,950. Call now
863-381-9857 Se Habla Español
or 863-634-8282.**



Two 18.4x26. Reduced \$300.
813-244-7253 or 813-626-4554.



**Kumho Tires - 11.R 22.5 14 PLY
trailer tire, KLT 12E 295 75R 22.5.
\$329.95. 772-201-7783.**



**'22 Hawk 250 Dirt Bike - Runs
good, low miles, FL title. Street
legal. \$950. 772-473-7910.**



**45' Box Trailers - Good for
storage, no titles, 2 available.
\$1,500 each. 772-287-2060.**



**Gators many to choose. Call
863-381-9857 or 863-634-8282.**



**Toro 5200 Pro Sweep - Pull
behind. \$2,500. 863-381-9857 Se
Habla Español or 863-634-8282.**



**Used CAT Wedge Style Loader Forks
Carriage 5' W, forks 5' L, good cond.
\$6,500. 941-776-1444. NO TEXT.**



**Terex Light Plant - 3 cyl. Kubota
diesel, 4 lights, 670 hrs., runs and
works great. \$2,500. Call today
863-581-2540.**



**16.00R20 Michelin Military -
\$300 each. 772-201-7783.**



**Numerous Trans. & Engines. For
info and price 772-287-2060.**



**Cushman Cart - 4x4, winch,
manual dump, Honda motor.
\$3,500. 863-381-9857 Se Habla
Español or 863-634-8282.**



**New Horse/Cattle Trailer with
spare tire. \$9,700 Now \$9,000.
813-244-7253 or 813-626-4554.**



**Assortment of Tires - Call for info.
863-381-9857 or 863-634-8282.**



**Set of 4 Cooper Discovery
Tires - Deep tread on Moto metal
wheels, 35 x 12.50 x 16. \$750.
Tires only \$400. 772-473-7910.**



**Grapples, buckets, tree spade,
pallet forks, etc. Call for info.
863-381-9857 or 863-634-8282.**



**'03 MB 1300 - 860HP. \$275,000
In Ocala. Several to choose
from. 800-FLA-OAKS.**



**New Priefert Squeeze Chute On
wheels. Reduced \$5,500. Call
813-244-7253 or 813-626-4554.**



WILD TURKEY MINE

- Approved Septic, Beach & Foundation Sand
- Approved Coquina Road Base
- Washed Shells and Large Landscape Shell Fossils
- Boulders - All Sizes
- Prime Landscaping, Sodding Dirt & Fill Dirt
- Bentonite and 200-500 Mesh Pond Sealer

4705 82nd Avenue, Vero Beach, FL 32966

Office: 772.299.4800 • Cell: 772.563.3936

E-mail: Sales@wildturkeymine.com

HEAVY HAULING



WE HAUL 20'-40' SEA CONTAINERS AND SHEDS
10' WIDE SPECIALTY DETACH LOWBOY • 53' LANDOLL W/WINCH

SHELL ROCK & FILL DIRT DELIVERED

Statewide Hauling • Heavy Off-Road Recovery & Towing Service

ONLY THE SUNSHINE COVERS FLORIDA BETTER!

BMJ TOWING, INC.

414 S Parrott Ave. Suite A • Okeechobee, FL 34974

863-763-2845

bmj@bmjtowing.com

www.bmjtowing.com



IRON RANCH CONTAINERS



HEAVY EQUIPMENT TRANSPORT NOW AVAILABLE

CARGO WORTHY CONTAINERS FOR STORAGE OR EXPORT

20s • 40s • 45s • 40' Reefer Containers

RENTALS AVAILABLE - CALL FOR INFO

561-320-1419 | WE DELIVER

www.ironranchcontainers.com



Chip's Auto Glass

"You chip it... we fix it"

Misty Greene

MistyRadebaugh@gmail.com

Chip Radebaugh, Owner - Serving your area for over 30 years

Specializing in
**HEAVY EQUIPMENT,
MOTORHOMES & SEMIS**

INSURANCE ACCEPTED

Mobile: 772.284.1616

Toll Free: 866.464.2447

Palm Beach • Martin • St. Lucie • Okeechobee
Brevard • Indian River & Central Florida



'07 International 8600 Pump Truck - Ready to work, Cummins ISH 400 HP, 10 speed auto. shift trans., 4,000 gallon tank, 300 gal. fresh water compartment, NVE607 pump, alum. hose trays, 472,594 miles. **Reduced \$49,500.** Call 772-777-5494.



9.00x20 \$179.95/11.00x20 \$209.95 Military. 772-201-7783.



John Deere 6 Cyl. Power Unit - PTO, instrument panel. mounted on skid. Call us or e-mail junkman048@gmail.com. Call 863-253-8798. Sebring, FL. More pumps & power units available.



John Deere 1070 - 2 WD, lift arms, PTO, 4,777 hrs, 3 cyl. diesel. \$6,500. 863-381-9857 Se Habla Español or 863-634-8282.



Generator - On frame, Stamford generator, 320KW, JD 6081. \$8,500. 863-381-9857. Se Habla Español or 863-634-8282.



Grapple Buckets - Few to choose from, Q/A \$1,500. Call 863-381-9857 Se Habla Español or 863-634-8282.



7' Broom - 3 P.T hook up, ready to work. \$2,500. Call us today 863-381-9857 Se Habla Español or 863-634-8282.



P&H R20 - All terrain AWD 20 ton 28'10", 64'10" boom reach, 4 cyl. Detroit diesel, Funk MD 1024E13 power shift trans, 4 spd. \$25,000. 863-381-9857. Se Habla Español or 863-634-8282.



Kubota M4030su - 2WD, 5 cyl. diesel, 2,174 hrs, lift arms, pro 1 remote. \$6,500. 863-381-9857 Se Habla Español or 863-634-8282.



TCM 870 Wheel Loader - EROPS, CEA quick attach bucket, 6 cyl. Nissan, turbo diesel. \$25,000. 863-381-9857. Se Habla Español or 863-634-8282.



Ford 3000 - Real straight and clean, 2WD, runs perfect. \$6,500. 863-381-9857 Se Habla Español or 863-634-8282.



'04 Ford F-550 - 4 door flatbed, 2WD, maintenance truck. \$10,000. 863-381-9857 Se Habla Español or 863-634-8282.



'99 Walk Around Pro Line 241 - Cuddy cabin on Load Rite aluminum Trailer, 5.7 Chevy engine, 250hp, Mercruiser out drive. \$7,500 OBO. Make offer. 863-381-5112.



Elastomeric Roof Coating - Professional use only, garden green, army green, 5 gallon buckets. \$25 per 5 gallon bucket. 10 available. Call now 772-473-7910.

**TO PLACE AN AD
OSEEKM@GMAIL.COM
OR CALL
772-473-7910**



This excavator has a strong running engine and hydraulics, but the ring gear needs repair as well as some other work. Great project machine or would be good for parts. Need to sell as soon as possible. Sold as is where is. **Reduced to \$22,500.**

CALL: 772-722-8188

5 Acre Agricultural Farm For Rent in Krome Ave



For Lease is this 5-acre lot with road access right off of Krome Avenue and 104th. Asking \$2,500 a Month. Electricity is available and has 3 wells for water. All agricultural uses such as nursery, farming, hydroponics, pastureland, or any similar uses. HD Video Available. CALL US ANYTIME, WE PICK UP! **(786) 457-3211 OR (786) 539-9272 CALL US ANYTIME, WE PICK UP!**

THANK YOU!
to all who attended and made purchases at our auction in Webster, FL on April 27th. We do appreciate your attendance!

RAYBON
VENTURES INC.
COMPLETE AUCTION SERVICES
Daylon Raybon: Principal Auctioneer
AU2384 | AB 3283
raybonauctions.com
Raybon Auctions

WE ARE IN NEED OF USED EQUIPMENT - WE PAY CASH!

CALL OR TEXT DAYLON AT 813-477-1449 OR ASHELEY AT 813-503-2375 FOR DETAILS



'21 Kia Stinger GT - Excellent cond., 40,615+ mi., all the options, extremely quick, grey metallic. **\$35,000.**



Komatsu PC 160 Excavator Bucket - 24", .5 yard capacity, used little. **\$3,500.**



'18 Forest River Trailer - 8'5"x24' ramp rear door, people door on right side, cargo door on left side, very well built. **\$8,500.**



'08 Bobcat 250 Skidsteer - All attachments, buckets, forks, backhoe & impactor, low hours. **Reduced \$25,000 OBO.**



'05 International 4300 - DT466, A/trans, runs excellent, recently inspected, has sticker. 373k mi. Young 24" box, lift gate. **Reduced \$16,500 OBO.**



2 Beverage Delivery Trailers - 6 doors each side, 80's model, road worthy and ready to go, great tool & equipment security/lock-up, transport. **\$4,000 ea. or \$7,500 for both.**



Class C Motor Home - Certainly restorable, needs a water pump to drive it home, roof vent was left open, tires good, have title. **\$2,250 OBO.**



Media Event Trailer - Roof over upper deck, completely electric outfitted, tandem axle, heavy duty, forward compartment for Genset, etc.



'84 17' 10" Ranger Bass Boat - Includes boat, motor and trailer, serviced and ready for use, new battery and ready to go. **Reduced \$4,250 OBO.**



Tandem Trailer - Heavy duty, hooks up to dump truck/road tractor, hauls logs, pipe, high beams, etc, 28' cap, pintle hitch. **\$3,750.**



'87 34' Oak Park Mobile Home. **\$8,500.**



'01 All Mack Dump Truck. **\$17,500.**



'10 Mini-Cooper - color red, convertible, great cond. **\$6,500.**



Nearly New Skeleton Bucket - CAT 320 size machine. **\$5,500.**



40' Livestock Trailer - Bill of sale and registration only, new floor. **\$1,500.**

AMERICAN OUTBACK 863-443-9279



FACTORY DIRECT, INC.

Metal Building Manufacturer

Garages

Sheds

Car/Boat/RV Ports

Buildings

Doors (Roll-Up/Sectional)

Metal Roofing & Components



26 ga. and 29 ga.

Different Profiles Available

Trim Packages & Custom Trim

Screws, Closures, Insulation

Skylights






American Made - Florida Product Approved





AG Panel



PBR Panel



2 1/2" CORRUGATED

1-(866)-227-7678

1-(866)-CARPORT

www.BuildFactoryDirect.com

Ft. Pierce A/C & Radiator



3361 South U.S. 1
Ft. Pierce, FL 34982
772-460-1143 Phone
772-460-5570 Fax

Bill Sapp
Owner/Manager
772-240-6320



Bean Spray 25 RC - Bumper pull, PTO driven, 11.25-28. \$2,950. 863-381-9857 Se Habla Español or 863-634-8282.



John Deere 2925A - 2 trak pro 60" cut gas mower. \$3,500. Call 863-381-9857 Se Habla Español or 863-634-8282.



Samsung SL 120-2 - EROPS, 6 cyl. Cummins, bucket. \$20,000. Call now 863-381-9857 Se Habla Español or 863-634-8282.



1000 Gallon Spray Rig - 3 pt hook up, pto driven, 2 to choose from. \$12,500. 863-381-9857 Se Habla Español or 863-634-8282.



Set of 4 Cooper Discovery Tires - Deep tread on Moto metal wheels, 35 x 12.50 x 16. \$750. Tires only \$400. 772-473-7910.



JLG Manlift - 4 cyl. Deutz diesel, all wheel drive, all wheel steer, motor runs like a top but won't move. \$6,500. 863-381-9857 Se Habla Español or 863-634-8282.



Kawasaki Mule - Non-runner, for parts. \$500. Call William for more info. 386-479-3067.



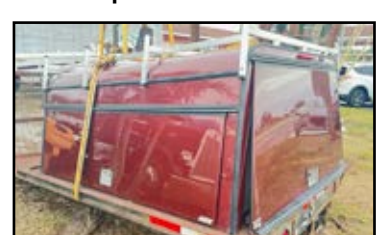
80kw Diesel Generator. \$2,500. Others also available. Call William 386-479-3067.



Mitsubishi Fuso FF - Standard trans, 253,057 miles, 14' flatbed, 4 cyl. Isuzu diesel. \$5,500. Call 863-381-9857 Se Habla Español or 863-634-8282.



Mako 250 - Two 175hp outboards, cuddy cabin, slip on dual axle aluminum trailer. \$4,500. Call 863-381-9857 Se Habla Español or 863-634-8282.



84"x 74 1/2 ARE Topper - All aluminum, 2 side doors, rear inside storage bins, aluminum roof rack/decal MX 204. \$1,075. 863-381-5112.



Firestone Performer 420/85R28 4 available. \$699 each, wheels available. 772-201-7783.



Spray Rig - 200 gallon, 3 pt hookup. \$1,500. 863-381-9857 Se Habla Español or 863-634-8282.

**CALL 772-473-7910 TO ADVERTISE
GET YOUR STUFF SOLD!!**

WANTED

**ANY EQUIPMENT CONSTRUCTION OR FARM
Skidsteers • Loaders • Tractors • Dozers • Mowers • Disks**

WE WILL BUY ANY AND ALL EQUIPMENT

J&K Equipment

863-528-1689 | e-mail: jkequipment@live.com



GET THE MOST CASH TODAY!

HEAVY HAULING NOW AVAILABLE!

Visit our website: jandkequipment.com



'85 CHEVY C-30 1 TON TRUCK



'85 Chevy C-30 1 Ton Truck - 9' electric dump bed, folding sides, automatic trans, 4x4, factory A/C works, 2 owners, kept in building for 30 years, used on small farm, 99K original miles, new tires, hitch, wired for trailer.
Reduced \$14,500. 941-725-2671.

OVER 55 YEARS' EXPERIENCE • PART OF THE EURO AUCTIONS GROUP

EXPOSE YOUR EQUIPMENT TO A GLOBAL AUDIENCE. CONSIGN TODAY!

**PURCHASES FROM 1 PIECE TO ENTIRE FLEETS
LOW RATE STRAIGHT COMMISSION
GUARANTEES AND ADVANCES
SELL AT OUR SITE OR YOURS!**

Auction Address: 654 West Southport Rd. Kissimmee, FL 34746
Contact one of our Account Managers today for more information:

Joe Thurston
+ 1 (407) 388-4888

Nick Gray
+ 1 (850) 508-7677

Sal Garcia
+ 1 (407) 205 3367

Jeffrey Schatz
+ 1 (786) 878-0072



www.yoderandfrey.com



Sunshine

Hydraulics & Parts

Hydraulic Hose Fabrication & Cylinder Repairs



2201 SE Indian street Unit Q5, Stuart Florida 34997

Sales@sunshine-hydraulics.com

(772) 324-8251

“ Serving the Treasure coast ”



WANTED ANY EQUIPMENT Construction or Farm

- Loaders
- Tractors
- Cars
- Trucks
- Mowers
- Disks



**WE WILL BUY ANY
Cars / Trucks / Machinery**
Call Today: 772-519-0060

A&A AUTO SALVAGE, INC.

visit our website: www.aa-autosalvageinc.com

2023 FORD F-53 MOTORHOME

This luxury RV is well-equipped for comfort and entertainment with all the amenities just like home.



Master bedroom with barn door • Open concept kitchen, dining and living area • White quartz kitchen countertops
Versatile cooking options • Full size washer & dryer • Auto-start generator • Exterior TV • Ample storage
Exterior gas line • Full length awning with LED lights • Custom protection paint

7.3L V-8, OHV 16V 35.5' Class A, gas, used very little, consider it brand new, 2,500 miles. Will sell for below payoff \$145,000. **\$115,000.** 941-725-2671.

WEEKS

WEEKS AUCTION CO., INC.

2024 SCHEDULE

Auctions held on the 2nd Friday of each month. Every item will be sold on Friday.

JAN. 12 • FEB. 16 • MARCH 15 • APRIL 12
MAY 10 • JUNE 14 • JULY 12 • AUG. 9
SEPT. 13 • OCT. 11 • NOV. 8 • DEC. 13

4851 West Highway 40 • Ocala, FL 34482
Ph: 352-351-4951 • Fax: 352-351-8455
Online Bidding at www.weeksauction.com
FL Lic # AB82 • Auctioneer Grady Weeks • FL Lic # AU110



John Deere 3046R Tractor - Belly mower, A/C, cab, 4x4, 200 hrs. \$27,000.



John Deere Sickle Mower - Model SB3108. \$2,800.



'85 Chevy C30 - Electric dump bed. 2nd owner, all original. \$14,500.



Ford 8N Tractor. \$2,750.

941-725-2671 | turnerfarmequipment.com



Southern Specialty Equipment, Inc

SSEQUIP.NET

26003 W US Hwy 27, High Springs, 32643

877-366-5399

SALES & SERVICE



Brouwer 1580 Sod Harvester



Brouwer TR 224 Ride on Turf Roller



Brouwer BV 85 Turf Vacuum



Brouwer Monument Setter





'85 International S1700 - 9.0 International diesel, Allison trans., steel dump body, 600 miles on rebuilt engine, runs good, ready to go, excellent tires. Call for info 863-447-0752.



John Deere 1070 - 2WD, ROPS, 4 cyl diesel, 6144 hrs, 3pt w/lift arms. \$4,500. 863-381-9857 Se Habla Español or 863-634-8282.



Gearmore - 3 pt hookup, pto driven sprayer, 400 gallon. \$1,500. 863-381-9857 Se Habla Español or 863-634-8282.



'92 Isuzu NPR - Turbo intercooler, 10' dump body. \$3,500. 863-381-9857 Se Habla Español or 863-634-8282.



The answer to 11.00x20 Military 11.00R20 heavy duty traction Goodyears. \$219.95 each. Call now 772-201-7783.



Toro Reelmaster 5510 5 Gang Reel Master Mower - 1505 Kubota diesel. \$4,500. Call now 863-381-9857 Se Habla Español or 863-634-8282.



Toro 2613 - 3 pt hook up, PTO driven blower. \$950. Call now 863-381-9857 Se Habla Español or 863-634-8282.



Huber M600 - 4 cyl gas powered grader, 9' blade, 23.1-28R, 6' push blade. \$3,500. 863-381-9857 Se Habla Español or 863-634-8282.



Challenger - pto V10 mower conditioner, pull behind. Call now 863-381-9857 Se Habla Español or 863-634-8282.



'15 Genie S-40 Boom Lift - 4WD, Deutz diesel engine, onboard generator, 3,200 hours, runs good, 40' reach. \$27,000. 305-720-7892.



Toro Reelmaster 5510 5 Gang Mower - Koelher diesel. \$2,500. 863-381-9857 Se Habla Español or 863-634-8282.



Volvo ECR - 88 Erops, push blade, 322 hrs, aux hyd. \$35,000. 863-381-9857 Se Habla Español or 863-634-8282.



Deutz F4L913 - 4 cyl. air cooled diesel, 2WD, lift arms, pto shuttle shift. \$2,950. 863-381-9857 Se Habla Español or 863-634-8282.



Kinze 2 Row Seeder - 3 pt hookup, power down. \$3,000. 863-381-9857 Se Habla Español or 863-634-8282.



Rhino V 152 Mower - Pin on PTO driven, needs TLC. \$1,000. Call 863-381-9857 Se Habla Español or 863-634-8282.



Excavator Grapple - Fits PC400. \$3,500. 863-581-2540.



'06 Power Max Diesel Generator - Trailer mounted, low hrs, John Deere diesel engine. \$9,500. 305-720-7892



'03 Genie Z45/25 Boom Lift - 45' lift, 4 cylinder diesel, 4WD, ex-county machine. \$21,000. 305-720-7892.



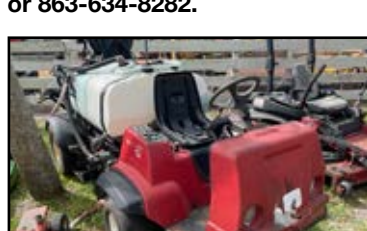
'99 Ford F-450 Bucket Truck - 7.3 powerstroke, A/T, 110k miles, cold A/C, ready to work, Versalift 30' reach. \$12,000. 772-618-5257.



John Deere 444c - 6 cyl. JD diesel, 3,165 hrs, EROPS, bucket hanger forks, 15.5-25 tires. \$20,000. 863-381-9857 Se Habla Español or 863-634-8282.



Kenco Hose Reel - 3 pt hookup, will lay it out/pick it up. \$500. 863-381-9857 Se Habla Español or 863-634-8282.



Toro Grounds Master 4500D - Koelher diesel, '03 4WD. \$6,500. 863-381-9857 Se Habla Español or 863-634-8282.



Rainflow Plastic Layer - 3 pt hookup, plastic width 3' - 5'. \$1,250. 863-381-9857 Se Habla Español or 863-634-8282.



2001-2003 Isuzu NPR 18' Van Bodies - 5.2L diesel, automatic, 3 to choose from. \$5,000 - \$6,000 each. Call William today for more info. 386-479-3067.



Ford 8n - 4 cyl. gas, 2WD, 3pt & pto, 4046 hrs. \$3,500. Call now 863-381-9857. Se Habla Español or 863-634-8282.



'19 289D3 - 2,025 hrs, cab and A/C, radio, camera, hyd. coupler. \$47,500. 772-485-8764.



'05 Freightliner FL80 Fire Truck 130K miles, Cummins diesel. \$19,500. 561-767-6032.



'15 Ford F550 - Cab and chassis, 2x4, 6.7 power stroke diesel, 188k miles, A/T new trans and turbo. Reduced \$20,000 OBO. Call today 772-201-7783.



Pull Behind Pin on Engine Driven Water Pump - 3" pipe. \$1,000. Call 863-381-9857 Se Habla Español or 863-634-8282.



'07 Chevy Express - 164,000 miles, runs and drives. \$4,500. 863-381-9857 Se Habla Español or 863-634-8282.



6' x 16' Horse Trailer - New tires, floor, paint, bumper pull. \$4,500. 813-244-7253 or 813-626-4554.

ORIGINAL SOUTHERN EQUIPMENT EXCHANGE GET YOUR STUFF SOLD!
772-473-4910
 EMAIL US AT: OSEEKM@GMAIL.COM



Ford 445 Industrial with loader, bucket, forks, bracket lift arms, 1 PTO. \$12,500. 863-381-9857 Se Habla Español or 863-634-8282.



Hitchhikers - 3 cyl. diesel, few to choose from. \$6,500 each. Call now 863-381-9857 Se Habla Español or 863-634-8282.



'20 Kubota KX 71-35 - 3 cylinder Kubota diesel with thumb, rubber tracked, ready to work. 863-632-4284.



TCM 820-2 - 5,322 hrs., 4 cyl. Kubota diesel, ROPS, Q/A quick coupler, aux hydraulics. \$22,500. 863-381-9857 Se Habla Español or 863-634-8282.



'18 Top Dresser - Drag activated model, ready to work. \$1,350. 561-767-6032.



6' Disc - Sealed bearings, new. \$850. Call now 813-244-7253 or 813-626-4554.



'11 New Holland Skidsteer - 2,600 hrs., runs and operates properly, 99% tires, bucket and forks included. Great sod machine. \$21,000. 772-473-9583.



Moffett M5500 - Kubota diesel, 4 cyl., 2,073 hrs., x2 Princeton PB50, 1,456 hours, ready to work. 863-632-4284.



Kubota L2501 HST - 4x4, 25HP, 3 cylinder diesel, 168 hours, like new, ready to work. 863-632-4284.



'17 Sea Hunt - 90HP Yamaha, depth finder, stereo, live well, fish box, seat cooler, lights, new batteries, recently serviced, CB radio, trolling motor, anchor lines, life jackets. \$14,900. Call today 772-528-7939.



Ford F450 Super Duty - 2WD dually, 7.3 diesel, automatic trans, G/N hitch, flatbed. \$6,500. Call 863-381-9857 Se Habla Español or 863-634-8282.



'95 Ford F Series Dump Truck - 5.9 Cummins, 6 speed, 16' bed, 137,077 miles. \$8,500. Call now 863-632-4284.



'18 Roadrunner Enclosed Trailer - 6'6" x 16', like new condition, less than 100 miles, used for storage, must see. \$8,500. 772-359-7590.



'13 New Holland 675E - 4x4, extenda hoe, OROPS, 4 cyl. Perkins diesel. \$15,000. Call now 863-381-9857 Se Habla Español or 863-634-8282.



'08 New Holland LS 170 - Diesel, runs and works excellent. \$9,600. 561-767-6032.



'22 Hawk 250 Dirt Bike - Runs good, low miles, FL title. Street legal. \$950. 772-473-7910.



Cutler Hammer Band Saw - 8 extra blades, 120 volt, works good. \$300.OBO 772-359-7590.

TO PLACE AN AD EMAIL US AT OSEEKM@GMAIL.COM OR CALL 772-473-7910

TJC INDUSTRIALS - SEBRING, FLORIDA

4'x4' 80 Series Gorman Rupp pump with John Deere diesel power, factory unit with digital starter panel, mounted on a tandem axle trailer with electric brakes. Less than 40 hrs. on unit, excellent pump. \$15,000.

6' x 6' Gorman Rupp Trash Pump with Deutz diesel power, trailer mounted, trailer frame is the fuel tank, unit includes lifting bale, new tires and new Napa brand battery. \$15,000.

Call or email us today! Thomas 863-471-8012 or Joshua 863-446-0450. tjcindustrials@yahoo.com
Visit us on Facebook

DIESEL INJECTION MECHANIC
37 Years Experience on Turbos, Pumps and Injectors

WANTED
Injector Pumps
Trade in Towards Purchase

Direct Line to a Fluid Mechanic
863-381-0538
780 Hancock Road
Sebring, Florida 33875

Call me about the 2 DAY CLASS I teach once a month. I will show you how to repair injection pumps, turbo's and injectors. **NOW TAKING CREDIT CARDS**

CASE • JOHN DEERE • KOMATSU • CUMMINS • CAT & MORE **KUBOTA • INTERNATIONAL • ALL POWER UNITS AND MORE**

AG98 TRAILER SALES

TRAILERS • CM TRUCK BEDS • LIVESTOCK TRAILERS

455 US-98 North • Okeechobee, FL

ag98frank@gmail.com • www.ag98trailer.com



'24 EBY D014K20 - 14K 20' Aluminum Deckover - \$15,897.



'24 Big Tex 14GN - 30' Gooseneck, non-CDL. \$13,195.



'24 MAXXD DOX10224 - 14K 24' Deckover - \$9,897.



CM Truck Beds in Stock.

www.AG98trailer.com



Truck Bed & Trailer Sales 863.763.3033
Parts & Service 863.763.3555



'24 MAXX-D C5X8324 - 7'x24', 10K GVWR. \$7,998.



'24 MAXX-D C5X8324 - 6.5'x12' single axle utility. \$3,648.



'24 GR Trailers - 6'x14' bumper pull, 7k GVWR livestock trailer. \$9,997.



'24 EBY Maverick 20' Aluminum Livestock Trailer. \$27,998.



'25 Aluma 6310S-BT - 5'x10', single axle. \$3,398.



'24 Big Tex 14LP-14 - 7'x14' dump trailer. \$11,198.

BROWER EQUIPMENT SALES



JLG Lull 644-B-42 - 42" reach, all hyd. cylinders, just rebuilt, runs great. \$39,995.



'17 Rhino 472 Rotary Mower - Heavy duty. \$3,495.



Genie AWP-36S Manlift - New battery, 36' lift capacity, ex county owned, fully functional. \$4,495.



Silver Edge Semi Tow Dolly - In good shape. \$2,495.



'15 Hamm HD10 Double Drum Roller - Low hours. \$17,995.



'08 Portable 6" Griffin High Head Pump - Just serviced, fully operational. \$14,995.



'16 Case 570N Skip Loader with box blade, low hours, in great shape, ex county owned. \$39,995.



The Hurricane 3 Point Ditcher - Serviced and ready for use. \$6,995.



'16 Genie GR-20 Runabout Manlift - In great shape, new batteries. \$6,995.



'18 Master Craft 8,000 lb. Rough Terrain Forklift - Low hrs, 4x4, fully functional. \$49,995.



5' Pull Behind Roller/10 Yale Ride On Reacher Stack Forklift - Low hrs, ex county owned, warranty on battery. \$17,995.



Holland 5' 3 pt Aerator - In great shape. \$2,995.



'11 International Prostar Semi Day Cab - Just serviced, 365k miles. \$14,995.



'03 Ford F350 Dump Truck - Only 59k miles, 5.4 liter, ex county owned. \$22,995.



Tandem Axle Semi Tow Dolly - Tires in good shape. \$2,995.



Kennco Single Row Plastic Layer - 3 point, in good condition. \$5,495.



Tree Transport Carrier - Great for landscapers, heavy duty. \$995.



Brillion 10' Pull Behind Cultipacker Pulverizer - Hyd. high lift, fully functional, ex-county owned. \$4,995.



525 Gallon Water Wagon - Pump tested and works, in great shape. \$3,495.



New 500 Gallon Double Wall UL Labeled Fuel Tank. Tank only, call about pump options.



'17 Broce BW260 Tow Behind Street Sweeper - Fully functional, just serviced. \$15,995.



'22 Scag 61" Ride On Commercial Grade Mower - Under 100 hrs., like new, demos-manufacturer warranty. \$5,995.



'16 Wacker Neuson Light Tower - 6KW generator, just serviced. \$5,995.



120, 250, 500, 1,000 Gallon Propane Tanks - Cannot be used for propane, great for smokers. Call for availability & pricing.



'17 Toro Dingo TX 427 - Just serviced, in great shape. \$17,995.



'20 Barreto 30-SG Walk Behind Stump Grinder - Just serviced, fully functional. \$17,995.



'15 Genie GTH5519 Telehandler - 1,600 hrs., fully serviced, in great shape. \$47,995.



'14 Ford F550 Flatbed with liftgate, under 20k miles, ex county owned. \$44,995.



'07 Basic Pneumatic Roller - Just serviced, fully functional. \$15,995.



Bush Hog 3008 8' 3-Point Mower - Ex-county owned, in great shape. \$7,995.



New 8'x20' Loading Ramp - 32,000 lb capacity, heavy duty. \$7,495.



'09 CAT 906H Wheel Loader - Under 1,700 hrs, just serviced. \$44,995.



New Stehl Tow Dolly - 2,999 GVWR. \$1,795.



New 750 Gallon Fuel Tank - Trailer - 12v pump, in great shape. \$7,995.



Skid Steer Attachments - New and used, see website or call for inventory and pricing.



'14 Ford E-350 Box Truck - 14' box, in great shape, just serviced. \$13,995.

VISIT OUR WEBSITE FOR MORE PICTURES AND DETAILS

**Mon. - Thurs.: 8:00am - 5:00pm
Friday 8:00am - 1:00pm**

WE WILL BUY 1 PIECE OF EQUIPMENT OR THE WHOLE FARM

Saturday by Appointment

**105 33rd Avenue East • Bradenton, FL 34208
941-720-5591 • www.broweronline.com**